

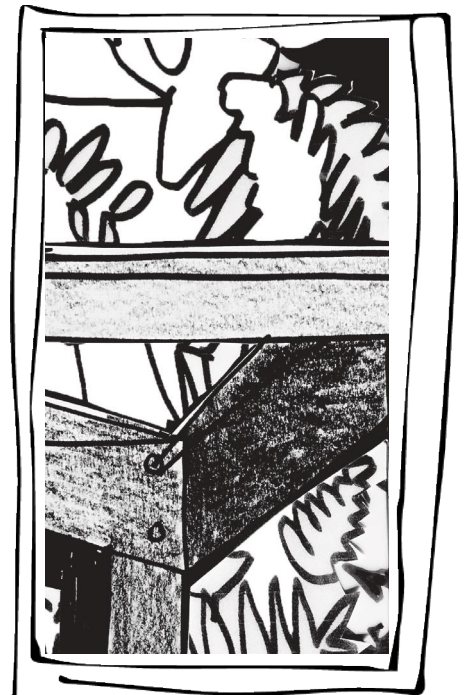
# ARCHITECTURE ART NATURE

Fredrick Gibberd's interest in the relationship between art, architecture and nature is evident throughout the garden

## Activity Sheet

The layout of the garden as a sequence of 'rooms' inspired Krijn de Koning to create a structure of dividing walls that acts to partition the space and draws attention to the relationship between the surrounding trees and the sculpture

- 1 **Overleaf** the ARCHITECTURE has been drawn as a collage of fragmented walls - gaps between buildings, stairs, windows and doorways
- 2 In each of the gaps you can **add drawings of NATURE**
- 3 You may want to **draw** a view of a whole plant or close up on the detail of one or two leaves
- 4 Think about the shape of **plants** and pick bold and striking forms
- 5 **Fill** the whole of each space taking the drawing right to the edge of the frames
- 6 Focus on the outline, working quite quickly to fill all the frames
- 7 Take your drawing home to colour

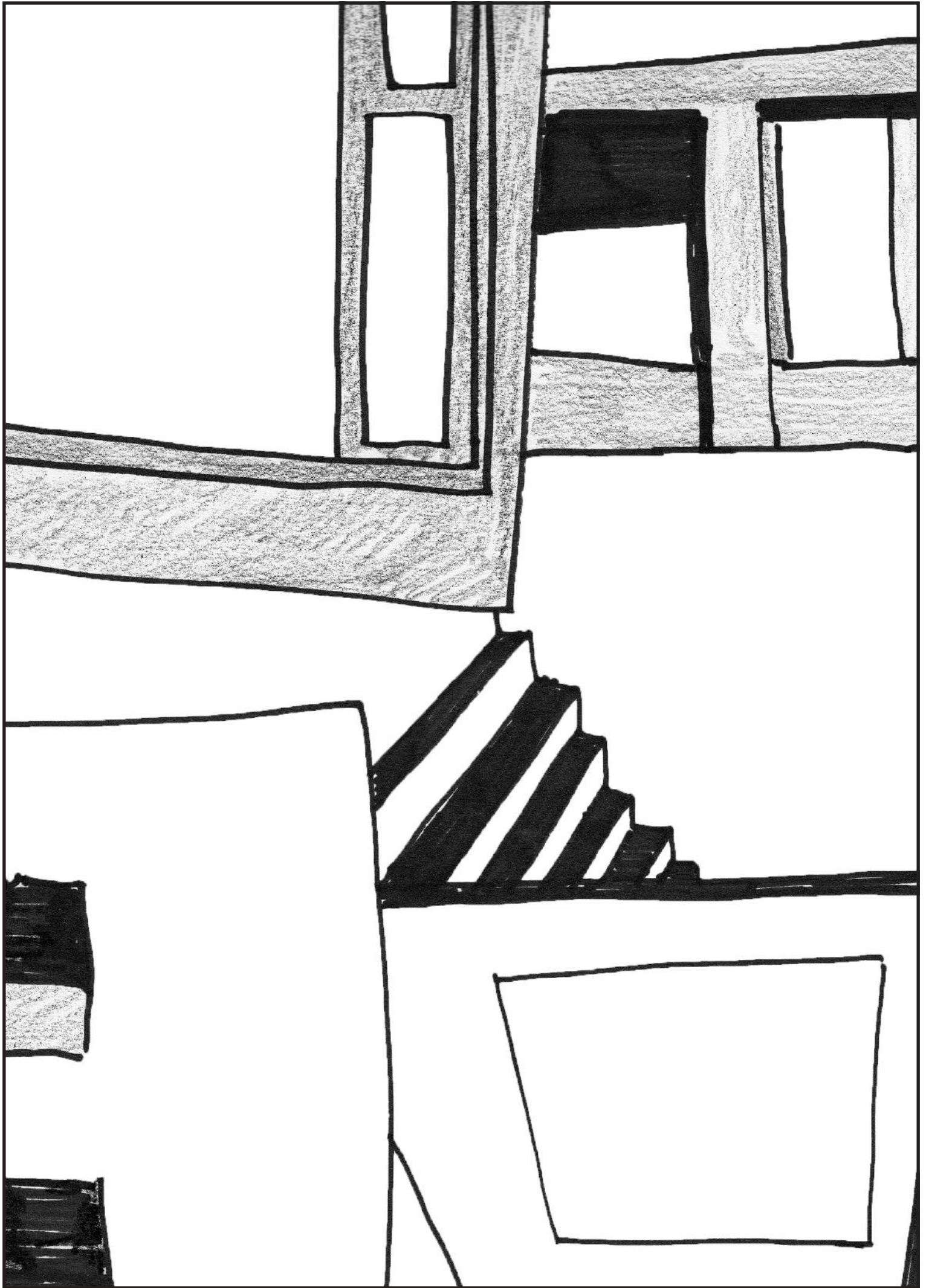


Please take a photo of your artwork and share it with us

Don't forget to tag your creations @UniHertsArts on Instagram, Twitter and Facebook using #CreateItShareIt #UHArtsatHome (ask a parent/carer if you're not on social media)

Working in partnership with UH Arts, artist Krijn de Koning has created Green/blue, a new site-specific installation at The Gibberd Garden. Part of the New Geographies project. Find out more, and take part in other activities at [www.uharts.co.uk](http://www.uharts.co.uk)

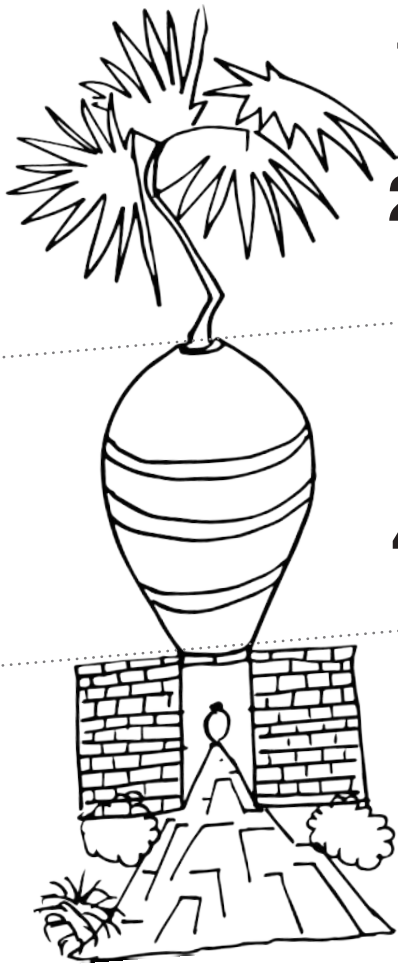
explore some of the ideas that inspired Krijn de Konings's installation Green/blue at the Gibberd Garden



# ARCHITECTURE ART NATURE

## Activity Sheet

You might recognise the game we are going to play, it is sometimes called 'picture consequences' or 'exquisite corpse'



**1** Make 2 **folds** in the paper so that it divides into 3 even sections and unfold

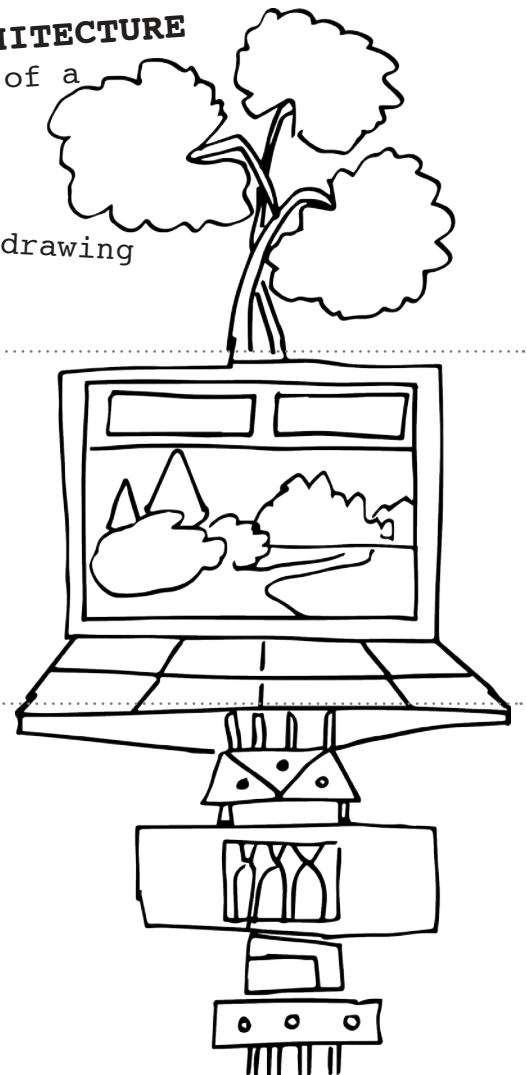
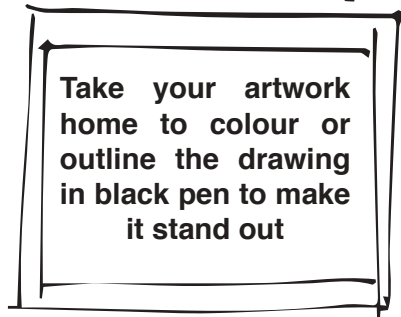
**2** The first person starts at the top and **draws NATURE**

Make it nice and big in the space  
Fold back the paper so just the bottom edge shows so the next person can line up their drawing

**3** The next person **draws ART** - look at the shape of one of the many sculptures in the garden. **Fold** back the paper again

**4** The final **drawing** is **ARCHITECTURE** - this can be an element of a structure in the garden

**5** Unfold to reveal your drawing



Please take a photo of your artwork and share it with us

Don't forget to tag your creations @UniHertsArts on Instagram, Twitter and Facebook using #CreateItShareIt #UHArtsatHome (ask a parent/carer if you're not on social media)

New **GEO**  
**GRAPHIES**



