

Sustrans: National Parks

26th November 2024



Our mission

“We make it easier for everyone to walk and cycle.”

Welcome to Sustrans | 21 November 2024



Scotland

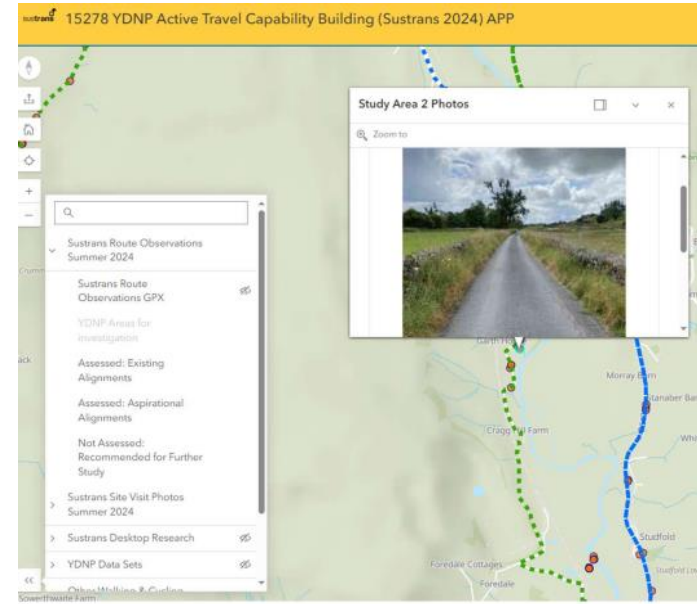
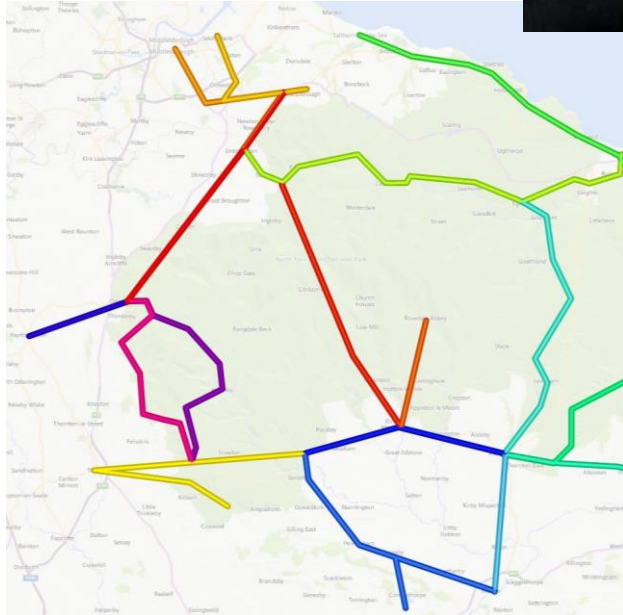


- Loch Lomond and the Trossachs
- Cairngorms

England



- Lake District
- North York Moors
- Northumberland NP
- Yorkshire Dales
- Peak District
- Norfolk Broads



Lune Valley



Issues

- NPs often seek advice in an unpaid, advisory capacity. Box ticking?
- NPs have limited access to transport funding. But can access Active Travel Funding Capability Building Fund (England), for example.
- BCR weighted to urban routes.
- Design challenge: LTN 1/20 v 'rural character'.
- BCR weighted to urban routes.
- Design challenge: LTN 1/20 v 'rural character'.





Before



After



Before



After



Before



After



Before



After

Opportunities

- Rural Guidance from ATE – Spring 2025?
- Repurposing leisure networks (eg New Forest)
- Partnership working across beneficiaries in the tourism industry.
- Embedding colleagues within NPs (Cairngorms NPA, Loch Lomond, Trossachs)
- LCWIPs are important, even in a NP/rural context.
- More needed on Quiet lanes.
- Relationship with HA is critical (extra layer)



We work for and with communities,
helping them come to life by walking,
wheeling and cycling.

We campaign to create healthier places
and happier lives for everyone.

Join us on our journey

www.sustrans.org.uk

Registered Charity No. 326550 (England and Wales) SC039263 (Scotland)
VAT Registration No. 416740656.

