

# International Corporate Guide

University of  
Hertfordshire **UH**





Awarded

**Gold**

for Teaching  
Excellence

*Teaching Excellence and Student  
Outcomes Framework (2018)*

Huge

**93%**

of graduates in work or further  
study within 15 months

*Higher Education Statistics  
Agency (2020)*

Up to

**£4,000**

scholarships  
available

Join over

**24,500**

students from the UK  
& around the world

On-campus

**Halls**

of residence; get to  
lectures within minutes

Get to central

**London**

from Hatfield in just 25  
minutes by train

Rated 2<sup>nd</sup>

**Safest**

university campus in the  
east of England

*Complete University Guide*

Awarded the

**Platinum**

EcoFriendly campus  
award

*EcoCampus (2018)*

# contents

## Contents

<b>1</b>	History	<b>27</b>	Our Network
<b>3</b>	Message from the Vice-Chancellor	<b>29</b>	Our Global Reach
<b>5</b>	Campus Investment	<b>31</b>	Global Academic Foundation (GAF)
<b>7</b>	Facilities	<b>33</b>	INTI University & Colleges
<b>9</b>	Schools of Study	<b>35</b>	Alumni
<b>19</b>	Research		
<b>23</b>	Developing Entrepreneurship		
<b>25</b>	International & Partners		

# History

1952 - 1959



## Hatfield Technical College

1952 saw the opening of a new Technical College in Hatfield, with HRH Prince Phillip, Duke of Edinburgh performing the opening ceremony. With its roots in Britain's pioneering aeronautical industry, the College soon established itself as an innovative force in education, awarding our first BSc (Engineering) qualifications to external students of the University of London in 1959.

1960 - 1968



## Hatfield College of Technology

In 1960, the institution was renamed Hatfield College of Technology and began to invest in computer science, buying the College's first digital computer (a National Elliott 803B digital computer) in 1963, at a cost of £24,010. In 1965, the college became recognised for 13 Honours Degree courses, including Computer Science and Civil Engineering, with BA (Hons) Business Studies coming a year later.

1969 - 1991



## Hatfield Polytechnic

In 1969, the school was designated as Hatfield Polytechnic, and by 1970 had formed the best equipped and staffed Computer Centre in the public sector in education. In 1975, the Polytechnic was reorganised into five schools of study and a centre for Management Studies.

By 1977, over 10% of the 4,000 students were from over 40 different countries. The Polytechnic achieved corporate status in 1989.



# QE-TNE Scheme

1992 - Present



## The University of Hertfordshire

Hatfield Polytechnic became the University of Hertfordshire on June 29, 1992. In 1998, our prestigious Formula Student team competed in the first ever competition held in the UK, winning the prize for the Best Presented Team.

2003 saw the opening of the de Havilland campus, a £120m project. In 2016 HRH Prince Phillip, Duke of Edinburgh, visited the university for the fourth time to open the Science Building. As of 2020 we have a student community of over 24,500, with many more studying at partners overseas.

The University of Hertfordshire is proud to be a participant of the QE-TNE scheme. The scheme independently measures quality across the UK's Transnational Education sector and promotes continued evaluation, improvement, and collaboration on a global scale.

with the University of Hertfordshire, ensuring academic quality, value and trust wherever a University of Hertfordshire degree is studied.



The QE-TNE Scheme's framework of placing the student experience at its heart aligns

# The Vice-Chancellor & Chief Executive

---

Quintin McKellar graduated in Veterinary Medicine in 1981, and gained a PhD in Veterinary Parasitology in 1984 from the University of Glasgow. He became Lecturer (1984), Senior Lecturer (1991), Reader (1994) and Professor and Head of Department (1996) in Veterinary Pharmacology at the University of Glasgow. He was appointed director of the Moredun Research Institute which carries out infectious disease research of livestock in 1997, and was appointed Principal of the Royal Veterinary College, University of London in 2004. Since 2011 he has been the Vice-Chancellor of the University of Hertfordshire.

He was awarded a Doctor of Veterinary Medicine in 2002, and has been awarded Fellowships of the Institute of Biology, the Royal Agricultural Society, The Royal Society for the Encouragement of Arts, Manufacturers and Commerce, The Royal College of Veterinary Surgeons and The Royal Society of Edinburgh. He has been awarded research prizes by The Wellcome Trust, British Veterinary Association, British Small Animal Veterinary Association, Royal Agricultural Society and Saltire Society of Scotland.

He is chairman of the Board of Trustees of The Pirbright Institute, the Innovation and Growth Policy Network of Universities UK, and the Universities Vocational Awards Council. He is chairman of the Hatfield Town Regeneration project, a Board member of the Hertfordshire Local Enterprise Partnership and a Non-Executive Director of the Centre for Innovation Excellence in Livestock. He was made Commander of the Order of the British Empire (CBE) in 2011.





# Quintin McKellar

CBE BVMS PhD DVM DipECVPT  
FSB FRSA FRAgS FRCVS FRSE

# Campus Investment

A major review of the University's vision for its estate has been carried out, to see how that vision can better serve students' needs going forward. Following consultation with staff, students and the University's external stakeholders, the vision will focus on building academic communities, co-locating staff and students and looking to integrate specialised teaching spaces and laboratories with academics' workspaces.

Creating vibrant, dynamic and flexible spaces that enable students and staff to engage easily with each other within departments and schools will help students to receive quick feedback and assessment of their work, addressing feedback from the National Student Survey. This underpins the University's commitment to giving our students the best possible teaching and learning experience.

Over the last 20 years we have invested half a billion pounds into our campus development to ensure our teaching environments and facilities are engaging, enterprising and industry relevant.

Our award-winning Science Building on our College Lane Campus (completed in 2016) was nominated for the 2018 Hertfordshire County Council Building Futures awards in the categories of construction excellence and design sustainability.



**2003**

The £120 million de Havilland campus is opened by HRH Prince Philip, Duke of Edinburgh, and our £15 million Sports Village and £500,000 Automotive Engineering Centre open

**2004**

Our £4.5 million Innovation Centre opens and the University receives the Queen's Award for Enterprise in International Trade





**2005**

**2006**

**2009**

**2011**

**2013**

**2014**

**2016**

**2020**

**2021/22**

The University is officially certified as a Fairtrade University

The University BioPark opens

Our £38 million entertainment venue, The Forum Hertfordshire opens

The £10 million Law Court building opens

Work begins on a new Student Accommodation project, over 2,500 new bedrooms created!

The Hutton Hub is opened making a central hub of student support on campus

HRH Prince Philip, Duke of Edinburgh, returns to open the £50 million Science Building

Our £12 million Enterprise Hub opens

The £7 million Forum redevelopment project is underway





# Facilities

---

Over the past 20 years we've invested almost half a billion pounds in our green campuses which span 125 acres, allowing students to study and live within easy reach of London. They can live on-campus in our £120 million student accommodation village so that walking to lectures only takes minutes.

Our libraries are open 24/7 nearly every day of the year, allowing people to study at whatever time suits them. With our inspiring learning spaces and cutting edge facilities, students have everything they need on their doorstep.

Those looking for a bite to eat can choose from two restaurants, eight cafes and two pubs which cater to a variety of dietary requirements including vegetarian, vegan and Halal. There's also the option to pick up essentials at our numerous shops.

Staying healthy is easy with a visit to the de Havilland Sports Village, which has a 100+ station gym, 25m swimming pool, climbing wall, cardio and weights areas, and sports courts.

Once coursework is finished for the day, many enjoy visiting the Elehouse or our newly redeveloped Forum, which will house a new informal bar and nightclub. This £7 million project space will be new for 2021/22 and will host social activities and events throughout the week!

Of course it's not just social activities we've invested in; our teaching and learning spaces are among the best in the country. Recently we've invested in a £12 million Enterprise Hub, which houses our business incubation centre and is a great support network for entrepreneurs. Members also have access to private meeting rooms and a network of like-minded peers.

On campus there's also our Cyber Security Centre, a Science Building with medical simulation suites, and our replica British Crown Court for law students. Just a few miles away from campus is our Bayfordbury Observatory, used by our astronomy and life science students.

Our free shuttle bus will take students between our de Havilland and College Lane campuses, however they are connected by a short walk with pathways and cycle routes if they prefer some fresh air between lectures. Everything on campus is designed with our students in mind to give them the best experience UH has to offer.

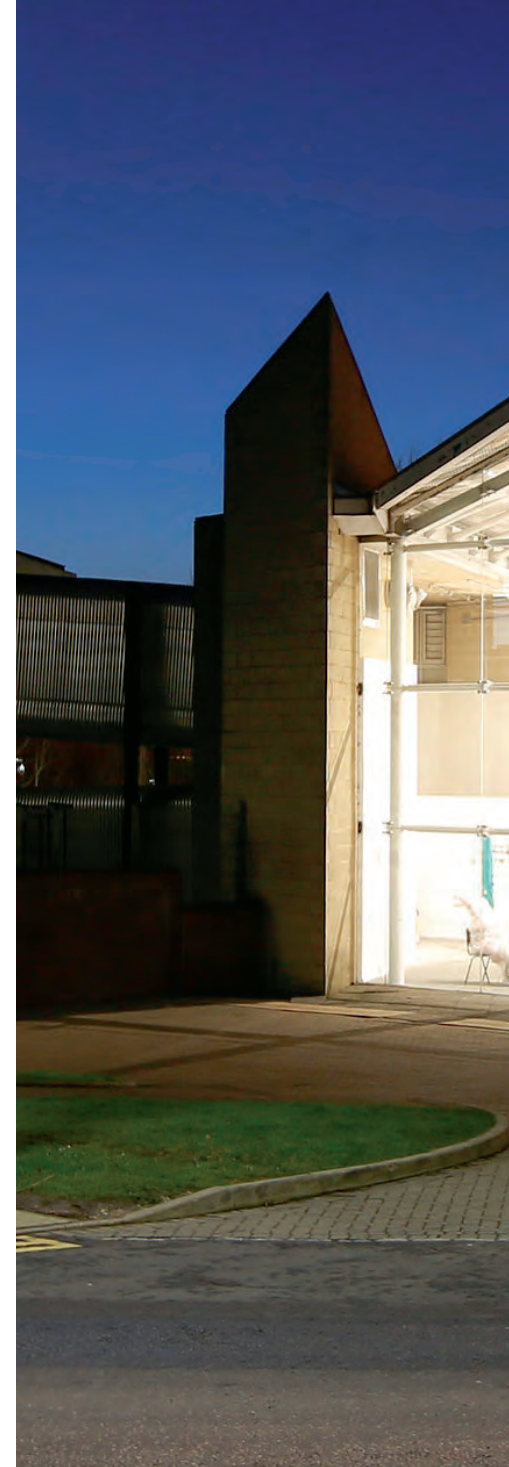
# Schools of Study

---

With over 300 programmes across eight Schools of Study, there is a course to suit all career goals.

We have state-of-the-art facilities, academic excellence and unique engagement with the worlds of business, commerce and the public sector. Close collaboration with industry means our course content is driven by business requirements, setting students up well for their future ambitions.

Many of our courses also include a placement option, allowing students to build the skills, contacts and experience needed for a rewarding career. There will usually be no tuition fees for the placement year and they will often earn a salary.











## Business

Hertfordshire Business School transforms students to enable them to play their part in the global economy; our collaboration with leading businesses, practical projects and placements, together with our location close to central London, mean students will have every opportunity to build the skills, contacts and experience you need for a rewarding career.

The new Enterprise Hub houses a dedicated business

incubation facility, designed to support business start-ups and graduate entrepreneurs to kick start businesses.

### **Subject Areas Include:**

*Business Analysis,  
Event Management,  
Finance, Human  
Resources, Marketing*

CIM

apm

ASSOCIATION  
AMBA

CIMA

CIPD

City & Guilds

CIPS  
Chartered Institute of  
Procurement & Supply  
AUSTRALASIA

aeme  
Association for Events  
Management Education

ibsa  
International  
Business School  
Alliance

tmi

CMI  
Chartered  
Management  
Institute

EFMD  
EPAS  
ACCREDITED



## Creative Arts

This vibrant school offers an inspiring, supportive environment with the latest technology. A huge range of facilities and purpose-built buildings mean there is hands on equipment for all courses.

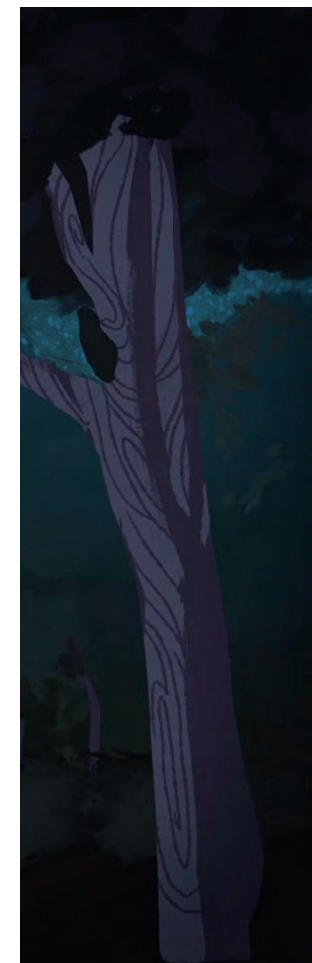
The School entrance gallery is the perfect exhibition space to showcase artist's work. Specialist rooms have been fitted for jewellery, glass, ceramic, and 2D and 3D workshops. 3D printers and digital animation suites allow Architecture and Animation students

to bring concepts to life. We also have a dedicated Gerber software suite for Fashion students.

Our equipment loan store and on campus photography, recording, and television studios allow students to create their own content for projects using our dark rooms and studio suites.

### **Subject Areas Include:**

*Animation, Design, Fashion, Film, Music*







## Education

---

Our innovative education courses reflect the social, political and technological changes taking place in the field, allowing students to make a positive influence on the lives of the children they teach.

Students will benefit from our expertise which spans curriculum

development, educational assessment, early childhood education, STEM education, and higher education teaching.

The School has strong links to hundreds of organisations, including nursery, primary and secondary schools, providing plenty of

opportunities to gain practical experience and tackle professional challenges head on.

**Subject Areas Include:**

*Early Childhood, Education, Primary*



## Health & Social Work

---

This school is the largest provider of radiography education in the country, and the first to offer paramedic degrees. Our X-ray and ultrasound laboratories allow for practical, hands-on skill development.

We also have the largest Clinical Simulation Centre in the UK with facilities such as a mock

ward, intensive care unit, pharmacy, operating theatres and community “home” simulated environments to engage with real members of the public.

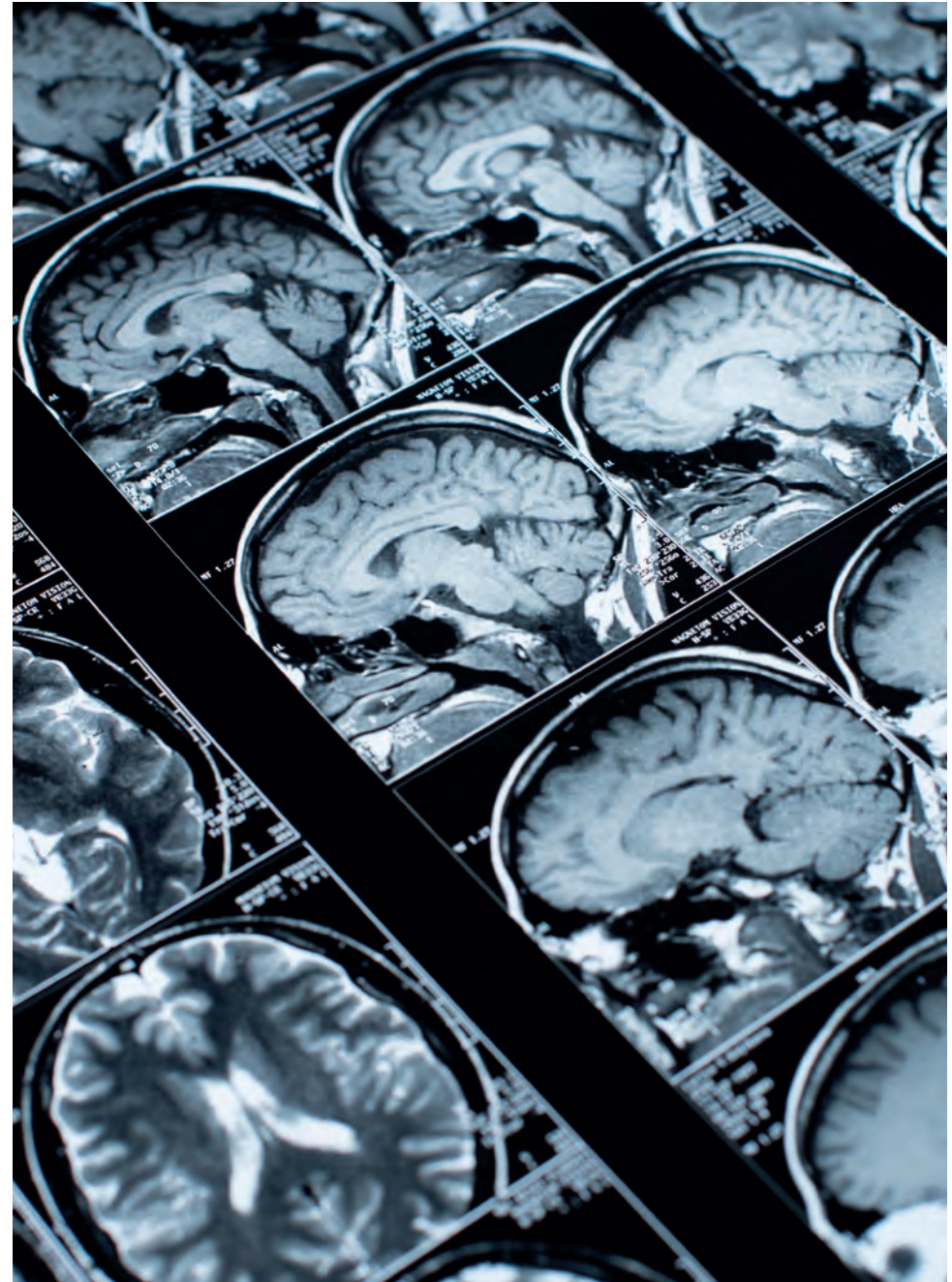
Our Radiotherapy students benefit from our virtual environment radiotherapy treatment room (VERT).

Many of our industry partners offer

placements, so students learn in real-world settings, improving lives and safeguarding futures every day.

**Subject Areas Include:**

*Radiography, Nursing, Paramedic Science, Physiotherapy, Social Work*







students view the world  
in a whole new way.

Our TESOL students  
get hands on  
experience teaching

Creative Writing students can join our free writing academy and enter competitions in poetry, prose, fiction, drama and short stories.

English, History,  
Journalism, Politics,  
Media





## Law

---

Our on-campus, full scale replica mock crown courtroom allows students to practise mock trials in a realistic setting.

There are a range of pro bono activities to get involved in, including volunteering at our Hertfordshire Law Clinic to provide free advice to the local community. Students will also have the opportunity to represent the School in both national and international competitions for mooting, trial advocacy, client interviewing and mediation. Our

students regularly beat teams from Oxbridge and Russell Group universities and win national trophies.

The curriculum is enriched with guest lectures, masterclasses, field trips, and opportunities to spend time studying abroad during their degree.

**Subject Areas Include:**

*Criminal Justice, Criminology, Law, Legal Practice*

NALP

BAR  
STANDARDS  
BOARD

Solicitors  
Regulation  
Authority



## Life & Medical Sciences

Our £50m Science Building houses specialist laboratories where we use research technologies including pharmaceutical manufacturing equipment, cell culture facilities and aseptic suites. For students studying Nutrition, there are also dietetics labs for food analysis.

Final year Sports Therapy students can also conduct clinical assessments, treatment and rehabilitation in our on-site Sports Injury Clinic.

**Subject Areas Include:** Bioscience, Geography, Nutrition, Pharmacy, Psychology, Sports

Our observation laboratory, complete with remote-controlled cameras, two-way mirror and digital edit suite is the perfect setting for psychology projects.







## Physics, Engineering & Computer Science

Taught by exceptional academics from across the STEM spectrum, our graduates have worked for employers such as NASA, Ferrari, Amazon and Morgan Stanley, to name a few.

Engineering students benefit from our supersonic wind tunnels and our driving and flight simulators. There is also the opportunity to join the Formula Student racing team and compete against other universities.

Computer Science students have access to specialist software labs, including artificial intelligence and

robotics suites; we even have a robot house for research into assisted living.

Our Bayfordbury Observatory is one of the best astronomical teaching observatories in the UK, giving students hands-on experience with a range of optical, radio and solar telescopes. We also have LiDAR and particle counter facilities.

### **Subject Areas Include:**

*Astronomy, Computer Science, Engineering, Physics, Mathematics*











# Research

---

Through their research, UK universities are contributing more than ever to future economic growth, and to positive changes in the way we all live, work and learn. At the University of Hertfordshire we are proud to play a significant role in these developments.

Our research provides solutions to major societal challenges, supports industrial innovation, enriches lives, and informs our teaching through a network of collaborations with businesses, the public sector, policymakers and charities.

We have long been recognised internationally for original, high quality research, with applied research being a particular strength. Today our research community is committed to finding inspiring and sustainable solutions to fundamental social, economic and environmental problems.

We organise our research by six themes: Food; Global Economy; Health and Wellbeing; Heritage, Cultures and Communities; Information and Security; and Space.



## Food

---

Food is essential for human existence and provides a touchstone for research that promotes human and societal progress, while ensuring the sustainability of the earth's natural resources and ecosystems.

The economy and society face grand challenges in terms of securing food productivity and resilience, while delivering positive impacts upon the environment, public health and social relations.

Research in this area applies science and technology, and social and cultural investigation to food consumption and production, forging cross-disciplinary collaborations between our different areas of expertise in order to inform and support industry, policy makers, the professions, and civil society to meet these challenges.



## Global Economy

---

Research in this area addresses issues in the Global Economy including innovation, development and economic growth, with an emphasis on inclusive, sustainable processes and historical approaches to understanding the global economy.

Informing policy at the local, national, regional, and international levels, researchers in this area engage in specialist and interdisciplinary work such as: managing complex change, digitisation of labour, value creation, work-based learning, employment, development and leadership in organisations and professions, the role of institutions, international law and regulation, the creative and digital economies, audio-engineering, adaptive systems, design and material culture, policy, and sustainable energy technologies.



## Health & Wellbeing

---

Poor health impacts on the quality of life of those directly affected as patients but also on families, health systems and societies. Achieving and maintaining physical, mental, emotional and social health and wellbeing for all members of society is a major world-wide challenge.

Research in this area is focused on improving mental and physical health and wellbeing across the human life span. We can draw on a wide range of disciplines including health science, biomedicine, biomedical engineering and medical humanities, to produce research that makes a difference to people's lives and that informs health care policies, patient care, and therapies.



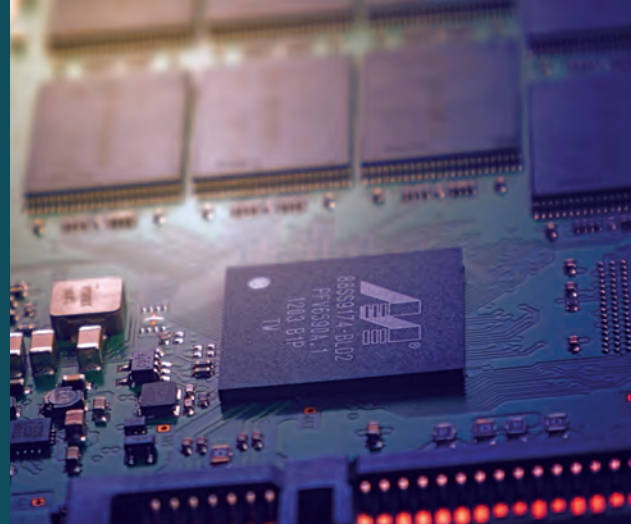
## Heritage, Cultures & Communities

.....

This theme spans a wide range of research that explores different cultures, heritage, and the ways in which contemporary communities create identities and social cohesion. It encompasses a variety of human endeavours from questions of ethics, faith, and gender, to the use of AI in the design of public spaces and buildings.

Researchers within the theme of Heritage, Cultures, and Communities investigate how these and other topics are translated and mediated through performance, narratives, images, and material cultures. Ultimately, we are working towards an improved future for our cities and communities.

The breadth of research within this theme highlights the interconnectedness of contemporary cultures and the ways in which our past and present influences our thinking about our future.



## Information & Security

.....

Information is vital to innovation in a rapidly changing world. With the advancement of information and communication technologies, an ever-increasing volume of data contributes to solutions addressing societal challenges such as, health and demographic change and ageing, food security, and clean energy.

Information is a highly valuable commodity and it needs to be secure. The theme of information and security encompasses strong research in areas such as robotics, artificial intelligence, algorithms, and biocomputation, as well as cyber security, biodefense and civil protection.

With funding and collaborators internationally, as well as within the UK, our research benefits from many state of the art infrastructure technologies.



## Space

.....

Researchers in this theme work in diverse areas of Astrophysics, Atmospheric Physics and Mathematics, including both pure and applied research.

The Centre for Astrophysics Research and the Mathematics and Mathematical Physics research group aim to expand human knowledge on scales ranging from microscopic quantum physics, to the large scale structure of the universe, taking in planetary systems around other stars along the way. For example, it played a key role in the 2016 discovery of a potentially habitable planet orbiting Proxima Centauri. More recently it co-led the 2018 discovery of a planet orbiting Barnard's star; the second nearest stellar system to ours.



# Developing Entrepreneurship

---

The University supports young start-up businesses and entrepreneurs with our newly redeveloped Business Incubation Centre offering a space for small businesses to grow and a chance for entrepreneurs to network with like-minded individuals. With dedicated space to carry out client meetings, the Enterprise Hub is a buzz with innovation and members have access to expert academic advice and support.

One particular success story is Suzero, a business selling low-sugar snack bars set up by student entrepreneurs Sam Marchant and Ollie Vagg while studying at the University. Support from the University enterprise team, including a £3,000 development grant and access to office space, enabled Suzero to expand, leading to the opening of its factory in Peterborough after just two years of business. As COVID-19 hit the UK, Suzero focused their efforts on direct-to-consumer sales

online and a full rebranding of their bars, which saw them average a 61% month on month growth in sales throughout 2020. Sam and Ollie used their success to give back by donating over 3,200 Suzero bars to front line workers and food banks across the country.

Our School of Creative arts is also the base for a unique design studio for the Herts Propeller company. Its function is to undertake commercially-facing work – drawing on the combined talents of students, graduates, staff and industry experts. This provides small businesses with the flexibility to take on unusual or large-scale projects that cross boundaries. From branding and interior architecture, to film production and interactive experiences, Herts Propeller draws on the experience and expert knowledge housed within the School to create inspirational, professional design solutions.

A further feature available to our students is the Assessment Centre Experience (ACE) offered by the University to support student employability. The ACE is an assessment simulation designed to help prepare students for the experience of going through an assessment centre, it is now used by one-third of employers as the first phase of their recruitment process. Our ACE has been recognised as one of the largest mock assessment centre simulations in the UK and was attended by over 3,000 students of the University of Hertfordshire in 2020. This was an excellent opportunity for students to network with employers, grow in confidence and develop critical skills that will help them secure placement and graduate roles.





# International & Partners

---

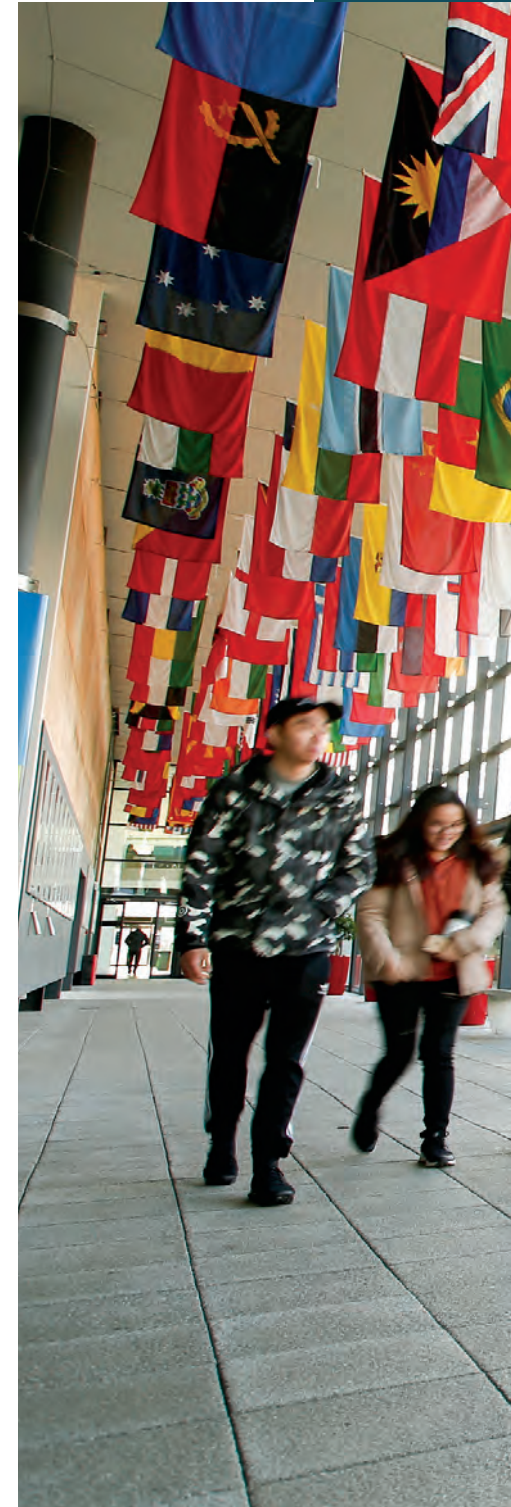
The University of Hertfordshire has a longstanding, successful history of engagement with international partners, and has been praised for its approach towards the extensive and complex range of collaborative partner institutions by the most recent QAA Review.

Building on our proud tradition, we remain at the forefront of international engagement by investing on modern, innovative and constantly evolving partnership models around the globe.

We currently have a total of 77 international partnerships across 5 regions, with partnership models including franchise, dual awards, fly-in faculty, academic support, supported distance learning, recognition and articulation agreements. A total of 4,798 students are studying for a University of Hertfordshire award overseas, generating an income of £2,454,289.

Staying true to the University's vision to be internationally renowned as the UK's leading business facing university, we have an integrated approach towards international engagement. This enables us to holistically inform our current and future strategic approaches and operationalise them effectively in a dynamic and competitive environment.

We are currently actively pursuing partnership opportunities across all global regions in order to enhance the University's reputation and further expand its reach in the global market. We remain passionate about offering the opportunity to students across the globe to study for a University of Hertfordshire award, and this drives our commitment to continue with the development of strategic partnerships worldwide.









# Our Network

---

Across the world the University of Hertfordshire has education partnerships hosting franchise courses, supported distance learning and articulation agreements, enabling those who cannot get to the UK a chance to study a Hertfordshire course.

We also have a series of overseas offices and in-country student recruitment specialists who support our applicants, agents and partners.

---

Different kinds of partnerships are available, including:

**Supported Distance Learning or Academic Support Agreement (ASA)**

These agreements are made with partners who support the delivery of UH programmes where this support is a necessary academic component of the programme, for example; online distance learning delivery.

**Franchised and externally validated provision**

A Memoranda of Agreement (MoA) is made with partners who deliver and assess a programme leading to a UH award.

**Dual Award**

Students receive a separate award from the University of Hertfordshire and the partner institution for programmes of study which have common elements.

**Branch Campus**

An extension of franchised and externally validated provision.





# Our Global Reach

.....

The University of Hertfordshire brings the transformational impact of higher education to all. Our staff, students, and businesses that we support consistently reach their full potential.

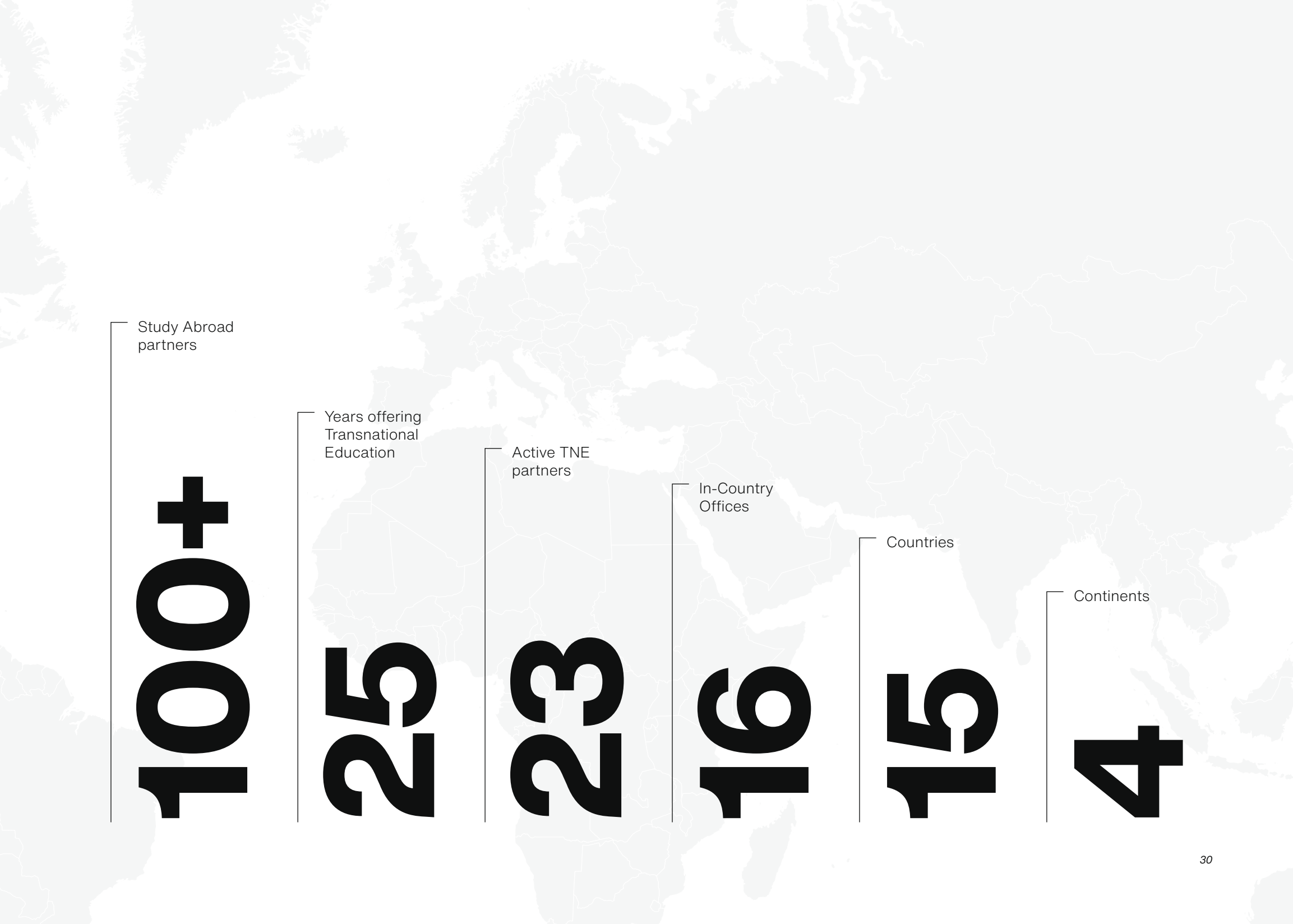
Over the past two decades the University of Hertfordshire has been developing a global network of academic partners with collaborative partnerships in countries across the world, to increase the availability of education to the next generation of graduates.

International alumni

290,000

Students per year studying a UH degree overseas

4,000

A light gray world map serves as the background for the infographic. The map shows the outlines of continents and countries. The infographic elements are overlaid on the map, with lines connecting the text labels to the corresponding numbers.

Study Abroad  
partners

100+

Years offering  
Transnational  
Education

25

Active TNE  
partners

23

In-Country  
Offices

16

Countries

15

Continents

4





# The University of Hertfordshire Hosted by Global Academic Foundation



"The University of Hertfordshire hosted by Global Academic Foundation has invested 1.6bn Egyptian pounds to date to create a state-of-the-art campus which delivers degrees validated by the University of Hertfordshire. Our vision is to empower our graduates to be the leaders, innovators and entrepreneurs that Egypt needs for the world of tomorrow."

**Professor Vincent Emery**

# University of Hertfordshire by Global Academic Foundation

---

In our most exciting partnership to date, the University of Hertfordshire has partnered with new Egyptian education group, Global Academic Foundation, creating our first ever 'Branch' overseas. The campus is uniquely located at the centre of Egypt's new administrative capital, 'New Capital City', located 20 kms East of Cairo. Our campus is one of the first institutions to open in New Capital, a purpose-built capital city the size of Singapore.

The inauguration Ceremony took place in December 2019 in the presence of H.E. Dr.Khaled Abdel Ghaffar, Minister of Higher Education & Scientific Research in Egypt. The development of the project has been supported by Universities UK International (UUKi), and the UK Department of Trade and Industry.

The campus currently offers full UH degree programmes in: Business, Engineering, Pharmacy, Computer Sciences, Mass Communications, and

Physiotherapy. The initial cohort of 150 students is expected to grow to 2000 students over the next 5 years.

Our campus is purpose-built by Global Academic Foundation for the University, and the final master building plan covers 50 Acres, including 22 buildings, 12 laboratories, a football court, tennis court, multipurpose court, gym, library, cafeteria, and bespoke transportation services.



# INTI University & Colleges

---

The University of Hertfordshire has been in partnership with the INTI Group for over 20 years, and this truly collaborative relationship has significantly helped shape the development of both institutions. During this time the number of courses offered at INTI has expanded, giving more students the opportunity to study on a range of University of Hertfordshire courses in Malaysia. Courses are on offer from our School of Humanities and Hertfordshire Business School, at both undergraduate and postgraduate level.

The INTI partnership is still the University's largest Transnational Education (TNE) partnership. More than 25,000 students have studied on University of Hertfordshire degrees at INTI in Malaysia (Franchise or Dual Award). Students studying on University of Hertfordshire programmes at INTI can also choose to transfer to the UK for a reciprocal student exchange, or even complete the final year of the degree on our campus in Hatfield. The programmes offer students in both destinations a fantastic opportunity to enhance their skills, become global citizens and experience a different culture.

We provide continuous support for our partnership with INTI throughout the year; this includes academic and International Office staff visits, guest lectures, presentations, competitions for students, and Alumni events. The Vice Chancellor visits Malaysia annually to attend the INTI Graduation ceremony.





# Alumni

---

Our Alumni go on to become amazing things; from writers and business owners, to sports personalities and criminal mind experts. We continue to support them for four years after graduation with access to careers advisors, consultations and advice to help boost their step into the professional world.

With a world-wide community of over 270,000 former students from the University of Hertfordshire, there are networking events, ambassador programmes and country chapters to get involved in.



## Kennedy Ameh

**Current Job:**

Machining Strategy Lead

**Graduated:**

2010

**Course:**

BEng (Hons) Aerospace Engineering

---

Since graduating, Kennedy has gone on to work for Collins Aerospace, a subsidiary of Raytheon Technologies Corp. He currently holds the role of Machining Strategy Lead within the Mechanical Systems Business Unit for Primary and Secondary Flight Control Systems. The Aerospace Engineering foundation from Hertfordshire has led him to roles in Central Europe, South East Asia and the UK.

Kennedy recognises the impact the University made on his career, having been exposed to many fantastic opportunities during his time at Hertfordshire, in our diverse student community. For his future aspirations, he says “I want to run an aerospace disruptive start-up in the future as I am very conscious of the opportunities emerging in markets like Africa. I hope to be an employer on the continent to enhance, enable and empower young minds like mine to operate globally.”



## Dennis Relajo-Howell

**Current Job:**  
Founder of Psychreg

**Graduated:**  
2014

**Course:**  
MSc Research  
Methods in Psychology



## Levon D'Souza

**Current Job:**  
Assistant Head Coach

**Graduated:**  
2016

**Course:**  
BSc (Hons) Sports  
Studies



## Chika Madubuko

**Current Job:**  
CEO of Greymate  
Care

**Graduated:**  
2014

**Course:**  
MSc Biotechnology

While studying for his master's degree, Dennis launched Psychreg, a digital publication which focuses on psychology, mental health, and wellness. Years after finishing his degree, his award-winning company now runs a blog, a podcast, and an open access journal. He also organises international events.

Dennis benefited from an excellent training during his master's degree at the University Hertfordshire; he's now pursuing a PhD in clinical psychology at the University of Edinburgh.

Owing to his advocacy of utilising blogs to promote positive mental health, Dennis is recognised as the world's first blog psychologist.

Levon is currently the Assistant Head Coach at the Barcelona Football Academy in Mumbai and aims to become Head Coach at the Barcelona Football Academy and move into a managerial role.

He says the most valuable part of the course was the practical experience gained through mandatory coaching hours, explaining it "forced [him] out of my comfort zone and helped improve my confidence to coach in different sports."

Moreover, gaining practical knowledge, propelled me to further gain theoretical experience in different fields of different sports.

MSc Biotechnology enabled Chika to push herself and provide a comprehensive and practical approach to the industry.

Since graduating, Chika's career has spanned across three continents and several multinational companies. She is currently the CEO of Greymate Care in Africa. In the future she would like to become a renowned business mogul and take the world by storm.

We were delighted to announce Chika as our International Alumnus/Alumna of the year for 2020.



