

Herts. Beats Faster.

Agent and
Counsellor Guide



University of
Hertfordshire **UH**

Contents

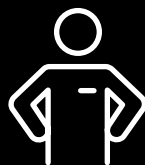
Why choose Herts?	2	Student life	56
Campus investment	6	Postgraduate experience	70
World-leading research	14	Career enhancement	72
Where to find us	16	Compliance	82
QS Stars Rating	28	Application guidance	92
Schools of Study	30	Application documents	102
Hertfordshire Business School	32	Index	120
School of Creative Arts	36		
School of Education	40		
School of Health, Medicine and Life Sciences	44		
Hertfordshire Law School	48		
School of Physics, Engineering and Computer Science	52		

Why choose Herts?



King's Award

Only university to be awarded the King's Award for Enterprise in 2024.



Industry placements

Herts students have undertaken placements at companies including Tesla, Microsoft and Google.



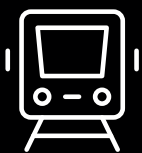
Rated 5 Stars (Excellent)

by QS Stars. A globally recognised university rating system assessing higher education institutions.



Excellent student experience

Ranked 1st in the East of England for overall student satisfaction.*



25 minutes from London

Reach the capital from Hatfield in only 25 minutes by train - there's so much to explore!



Vibrant campus

Join over 36,000 students from over 110 countries. Our campuses are welcoming, diverse and packed with things to do!



King's Award



The University of Hertfordshire has been honoured with the King's Award for Enterprise for its highly effective internationalisation strategy.

Considered the country's highest business accolade and approved by both the Prime Minister and His Majesty the King, the University was recognised for its excellence in international trade, winning the King's Award for International Trade for Outstanding Continuous Growth in overseas sales over the last six years.

The only university to be awarded a King's Award for Enterprise in 2024, Herts was recognised for how it has developed and grown its internationalisation strategy, which has resulted in a booming international community at its Hertfordshire campus, and an extensive overseas partner network delivering the University's education.



Campus investment

- 8 Where we started
- 10 Investment timeline
- 12 International Office





Where we started

The University of Hertfordshire has a rich, vibrant history of higher education excellence. We've been transforming bold ambition into impactful achievements for more than 70 years.

1952 - 1959



Hatfield Technical College

1952 saw the opening of a new Technical College in Hatfield, with HRH Prince Phillip, Duke of Edinburgh performing the opening ceremony. With its roots in Britain's pioneering aeronautical industry, the College soon established itself as an innovative force in education, awarding our first BSc (Engineering) qualifications to external students of the University of London in 1959.

1960 - 1968



Hatfield College of Technology

In 1960, the institution was renamed the Hatfield College of Technology and began to invest in computer science, buying the College's first digital computer (a National Elliott 803B digital computer) in 1963, at a cost of £24,010. In 1965, the college became recognised for 13 Honours Degree courses, including Computer Science and Civil Engineering, with BA (Hons) Business Studies coming a year later.

1969 - 1991



Hatfield Polytechnic

In 1969, the school was designated as Hatfield Polytechnic, and by 1970 had formed the best equipped and staffed Computer Centre in the public sector in education. In 1975, the Polytechnic was reorganised into five schools of study and a centre for Management Studies.

By 1977, over 10% of the 4,000 students were from over 40 different countries. The Polytechnic achieved corporate status in 1989.

1992 - present



The University of Hertfordshire

Hatfield Polytechnic became the University of Hertfordshire on June 29, 1992. In 1998, our prestigious Formula Student team competed in the first ever competition held in the UK, winning the prize for the Best Presented Team.

2003 saw the opening of the de Havilland campus, a £120m project. In 2016 HRH Prince Phillip, Duke of Edinburgh, visited the University for the fourth time to open the Science Building (now Nexus). As of 2025 we have a student community of over 36,000, with many more studying at partners overseas.

Investment timeline

Over the past 20 years we've invested almost £500m in our green campuses.

As part of our ongoing investment in our estate, we plan to open a new Health building in 2028, subject to planning approval, which will feature essential teaching facilities for fields such as nursing, midwifery, paramedic science, physiotherapy, social work, and optometry.

Our 2030 Vision requires a capital investment across the next 10 years of £180m. It will enhance the external spaces and movement across campus, improving accessibility for all. Our Vision includes a new Business and Social Building, completion of a Forum Lecture Theatre, new Engineering, Technology and Computer Science building, and remodelling improvements.



2003

£120 million de Havilland campus, £15 million Sports Village, and £500,000 Automotive Engineering Centre opens



2016

£50 million Science Building, Nexus, opens



2020

£12 million Enterprise Hub opens

2004

£4.5 million Innovation Centre opens and the University receives the Queen's Award for Enterprise in International Trade



2006

University BioPark opens



2009

£38 million entertainment venue, The Forum Hertfordshire opens



2014

The Hutton Hub opens, becoming a central hub of student support on campus



2013

Work begins on a new Student Accommodation project; over 2,500 new bedrooms created



2011

£10 million Law Court building opens

Future

Plan to invest £180 million over the next 10 years



2022

£7 million Forum redevelopment project



2024

£92 million Spectra building opens

International office

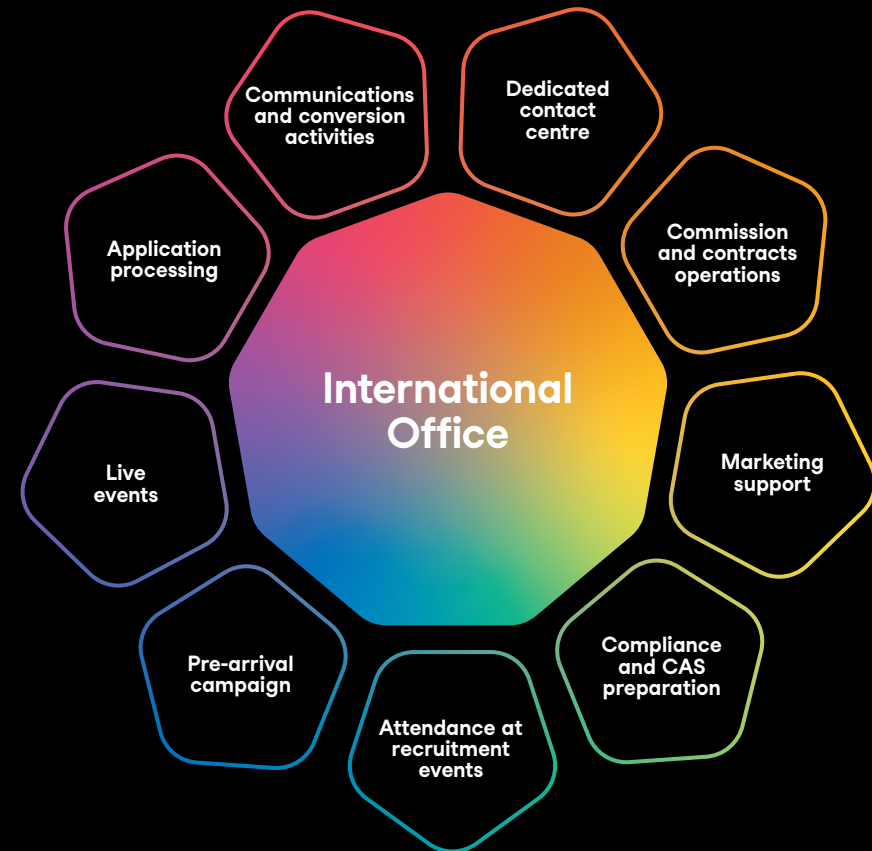
Over the past few years we have invested significantly in our international operations, to enhance our global reach and deliver more opportunities for students to access our education.

Our UK office now has over 55 staff members, looking after all aspects of the applicant journey from enquiry to enrolment. We also service our global recruitment network, bringing together all elements of our operation, ensuring a streamlined service for you and your applicants from the start of our partnership.



As well as investing in our people, we have also been busy developing our systems and services, such as:

- Implemented an AI Chatbot, which allows you to find detailed information about the University 24/7
- Pre-arrival portal for applicants to easily access information on registration
- Agent and Partner Toolkit – detailed and up-to-date information for you to use when speaking with applicants and parents
- The launch of our online agent training portal, giving you easy to digest training videos
- Enhanced compliance process to maintain reduced visa refusals



World-leading research

Held every 6-7 years, the Research Excellence Framework (REF) is a nationwide assessment of the quality and impact of research at UK higher education institutions.

According to the REF 2021, the University of Hertfordshire is the top ranked post-92 university and is in the top 25% of all universities in terms of research impact. The University has also risen to 32nd place in its research impact ratings, the highest rise of any university in the sector; a rise of 61 places since REF in 2014.



Climbed 21 places

in the Research Excellence Framework's rankings from 83rd to 62nd.



Top-ranked

post-92 University for research impact (32nd overall).



78% of research

has been ranked as world-leading (4★) or internationally excellent (3★).



In the top 25%

of all universities for research impact in the UK.

x2

World-leading

research (4★) has more than doubled since 2014 (from 11% up to 26%).



90% of our research

impact was classified as outstanding (4★) or very considerable (3★).

Where to find us

- 18 Welcome to Herts
- 20 College Lane campus
- 22 de Havilland campus
- 24 Access to London
- 26 Global recruitment





Welcome to Herts

Discover a diverse, campus-based community where your students' career aspirations become reality.

Our courses are designed in partnership with employers and our facilities align with the demands of the industries students will work in after graduation.

Thanks to strong transport links around us, it's easy to visit London and other UK cities, as well as Europe. We have fast links to London's four major airports, so it's easy to reach us after a flight.

Our easy local transport options also make us an ideal place for exploring Hertfordshire and the surrounding counties.





Leeds

Manchester

Liverpool

Birmingham

Cambridge

Luton

Stansted

Oxford



Cardiff

Bristol

Reading

Heathrow

London

Gatwick

Exeter

Southampton

Brighton

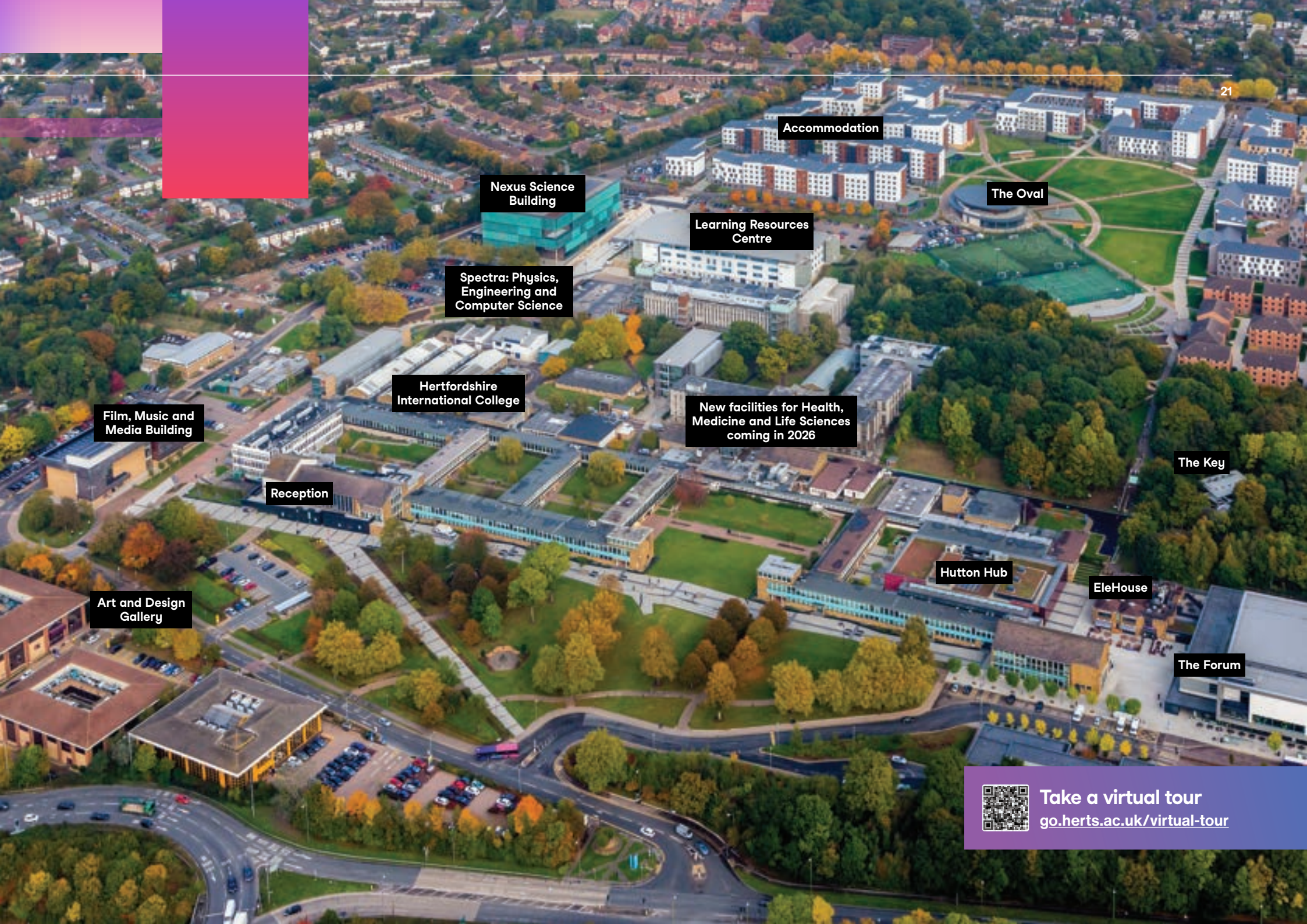
Plymouth

College Lane campus



This vibrant, green campus is a great place to study and socialise.

It is home to our science and creative arts subject areas. Students in our School of Physics, Engineering and Computer Science; the new School of Health, Medicine and Life Sciences; and School of Creative Arts will study on this campus. In addition, this is home to many of our student services, our Students' Union, on campus accommodation and Hertfordshire International College.



Accommodation

The Oval

Nexus Science Building

Learning Resources Centre

Spectra: Physics, Engineering and Computer Science

Hertfordshire International College

New facilities for Health, Medicine and Life Sciences coming in 2026

Film, Music and Media Building

Reception

The Key

Hutton Hub

EleHouse

Art and Design Gallery

The Forum



Take a virtual tour
go.herts.ac.uk/virtual-tour

de Havilland campus

This modern campus offers quick access to sports facilities, the Enterprise Hub, and local shopping and entertainment.

It is home to the Hertfordshire Business School, Hertfordshire Law School, and School of Education. It is only a 15-minute walk between this campus and College Lane, and students can also make use of the free inter-campus shuttle.



Take a virtual tour
go.herts.ac.uk/virtual-tour



Sports Village

Food Court

Accommodation

Main Building

Weston Auditorium

Enterprise Hub

Learning Resources Centre

Law Court Building



Access to London

Easy access to the multi-cultural business capital of the UK

Our campuses, combined with Hatfield's excellent location just 25 minutes by train from London King's Cross, allow students to experience the best of both worlds. They have easy access to Central London, but without the cost of living associated with being in the capital.

Global businesses

London is not just for recreation, it is one of the largest city economies in the world. Students have access to numerous career and placement opportunities in a variety of industries; including business, finance, healthcare, and creative sectors, with many Fortune 500 companies being based in London.

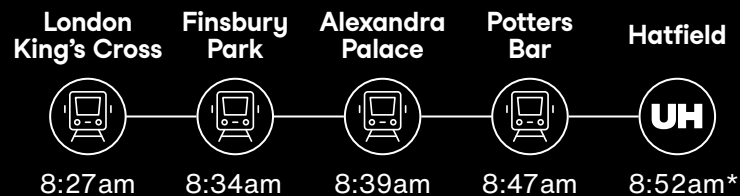


Sights and culture

During their free time, students have the opportunity to explore our colourful, multicultural capital city. London has amazing museums and art galleries (most of which offer free entry), beautiful parks, vintage markets and some of the world's most historic sights. Our Dean of Students team organises trips to London shortly after the start of term, to allow students to explore the capital as a guided group, helping build confidence in navigating their way around and using the tube.

Access to the UK and Europe

Being so close to London also has the advantage of easy access to the rest of the UK and Europe. Alongside the airports, the Eurostar from St Pancras has direct trains to France, Amsterdam and Brussels. Train travel to other parts of the UK is also easy from London, with direct trains to all main cities, even Scotland, allowing students easy access to explore the country during weekends and term breaks!



*indicative journey times, November 2024

Global recruitment

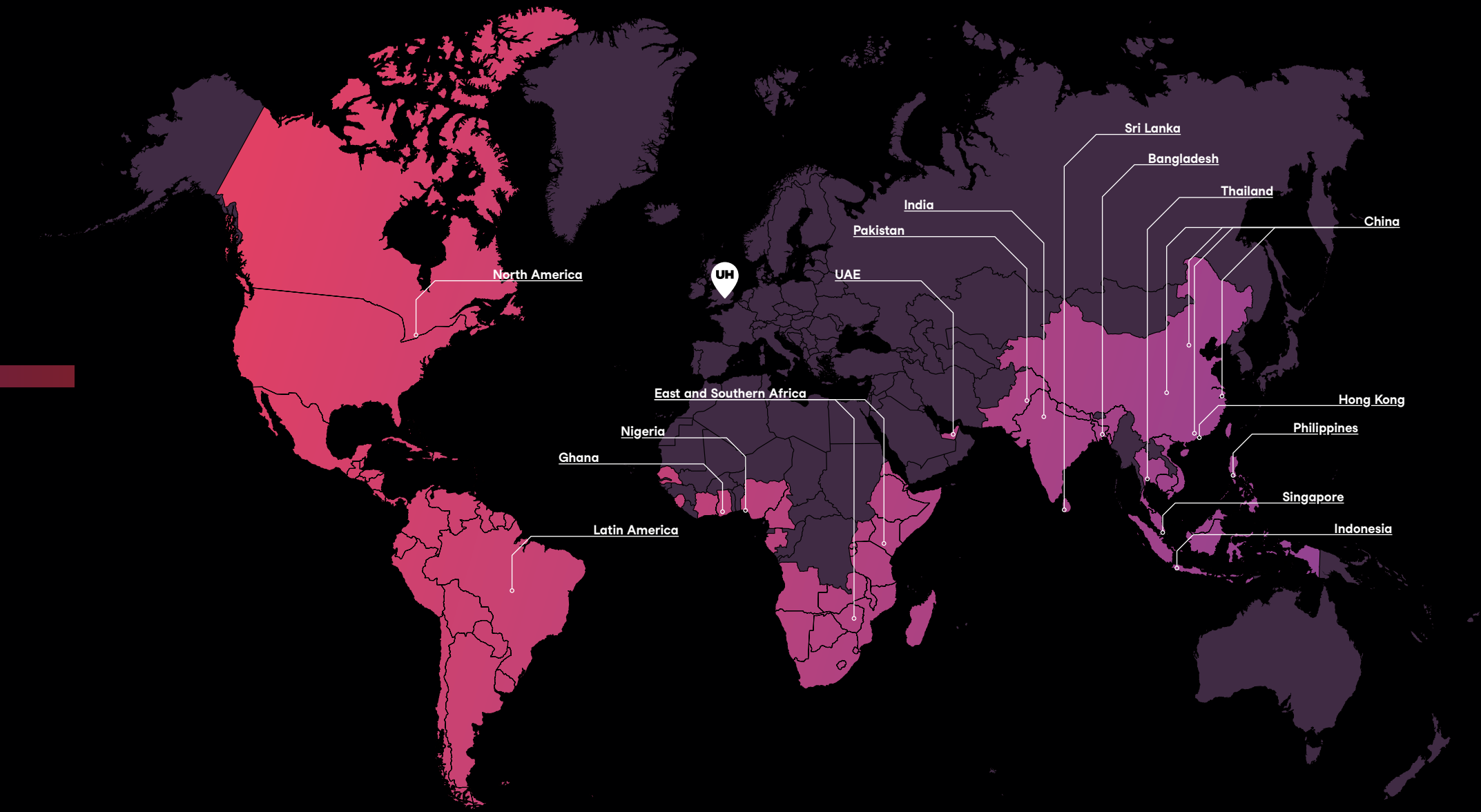
The University of Hertfordshire is a UK institution with a global reach.

We operate in many countries, and have Hertfordshire representatives in key cities around the world. Our In-Country Representatives (ICRs) provide country-specific support to our recruitment network.

○ ICR location

● Regions covered by ICRs





North America

UH

East and Southern Africa

Nigeria

Ghana

Latin America

India

Pakistan

UAE

Sri Lanka

Bangladesh

Thailand

China

Hong Kong

Philippines

Singapore

Indonesia

QS Stars Rating



We have recently been awarded 5 Stars overall in the latest QS Stars, a globally recognised university rating system assessing higher education institutions.

Through independent and in-depth evaluations based on a wide range of performance indicators across several categories, the University demonstrated strong performance with a total score of 779/1000.

With ratings from 0 to 5+ Stars overall and 0 to 5 Stars in individual categories, QS Stars allows universities to showcase their strengths across multiple categories, providing a unique way for institutions to demonstrate their achievements, regardless of how they fare in traditional rankings.

The most comprehensive mark of higher education excellence, QS Stars also helps prospective students identify their best-fit universities based on their interests, priorities and career aspirations.



Teaching

110/150



Environmental Impact

77/100



Facilities

99/100



Employability

137/150



Global Engagement

125/150



Governance

81/100



Equality, Diversity, and Inclusion

45/50

Schools of study

- 32 Hertfordshire Business School
- 36 School of Creative Arts
- 40 School of Education
- 44 School of Health, Medicine and Life Sciences
- 48 Hertfordshire Law School
- 52 School of Physics, Engineering and Computer Science



Hertfordshire Business School

Hertfordshire Business School enables students to play their part in the global economy. Our practical projects, placements, and collaboration with leading businesses, along with our convenient location close to central London, provide students every opportunity to build the skills, contacts, and experience they need for a rewarding career.

Subjects Include

- Business Administration
- Economics
- Event Management
- Finance
- Human Resource Management
- International Business
- Marketing
- MBA





3rd for Business and Management Studies in the East of England
Complete University Guide, 2025

3rd for Communication and Media Studies in the East of England
Complete University Guide, 2025

3rd for Marketing in the East of England
Complete University Guide, 2025

PRCA
The Power of Communication

tmi

CMI
Chartered Management Institute

CIM

 **ICAEW**

aeme
Association for Events Management Education

 **apm**

Facilities

- Enterprise Hub with dedicated business incubation facility
- Support for business start-ups and graduate entrepreneurs





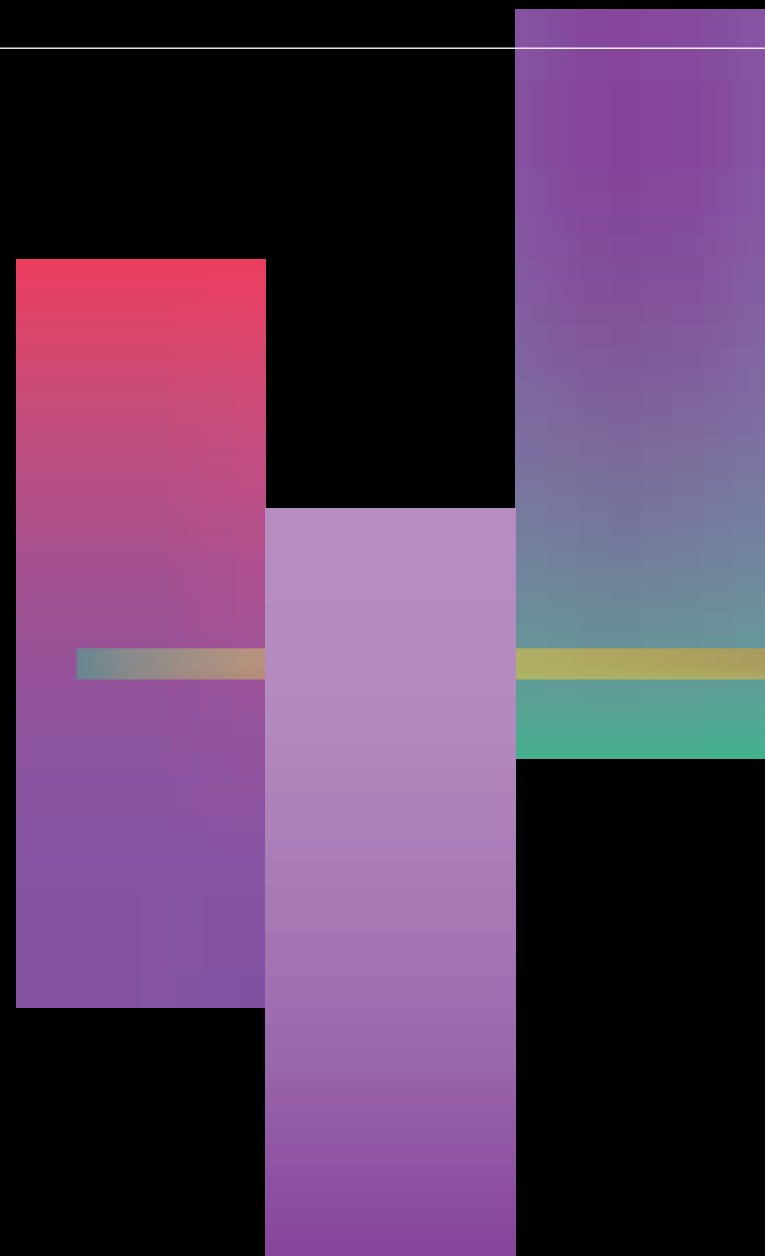
School of Creative Arts

This vibrant school offers an inspiring, supportive environment with the latest technology at our students' disposal. With a huge range of facilities and purpose-built buildings, we provide hands-on equipment for all courses, allowing students to bring their creative concepts to life.

Our equipment loan store, dark rooms, studio suites and on-campus photography, recording, and television studios, allow students to create their own content for projects.

Subjects Include

- Animation
- Architecture
- Audio Engineering / Recording
- Fashion
- Film and Television Production
- Graphic Design
- Photography
- Visual Effects





1st

in the UK (7th in the world)
for Design Education

World Brand Design Society, 2023/24

1st

in the UK for Best
Creative School

The Rookies Top Global Creative
Schools, 2024

1st

in the UK for Animation and
Game Design

The Guardian, 2023

1st

in the UK for Creative Media
and Entertainment

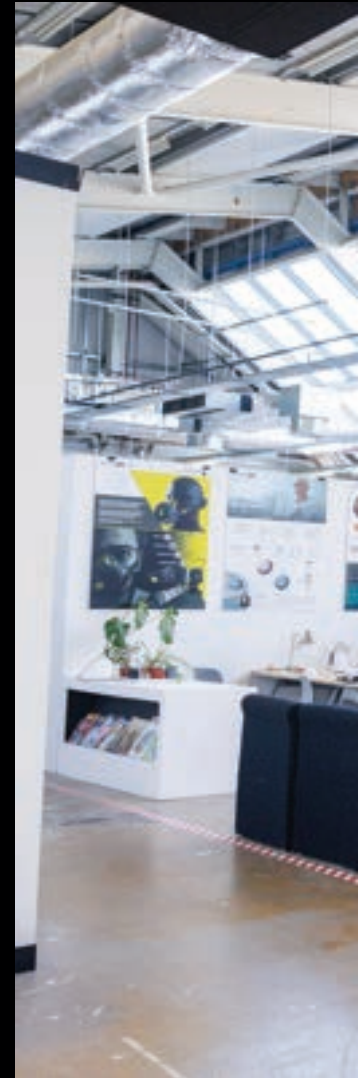
Rookie Awards, 2022





Facilities

- Sculpture studio containing state-of-the-art moulding and casting rooms, as well as a plaster room
- Television, recording and photography studios
- Digital animation suites
- Art and design gallery
- Equipment loan store
- 3D printing facilities
- Gerber Suite





School of Education

Our innovative education courses reflect the social, political and technological changes taking place in the field of education, allowing our students to have a positive influence on the lives of the children they teach.

Students benefit from our expertise, which spans curriculum development, educational assessment, early childhood education, STEM education, and higher education teaching.

Subjects Include

- Early Childhood Education
- Education Studies
- Teaching English to Speakers of Other Languages (TESOL)
- Outdoor Environmental Education





4th for Education in the East of England
Complete University Guide, 2025

12th for Education in the UK
The Guardian, 2025

top 10% for Overall Student Positivity in the UK
National Student Survey, 2023



Facilities

- Small-scale replica simulation room of an early years classroom
- Extensive network of over 500 schools and training providers across Hertfordshire, Bedfordshire, Buckinghamshire and Cambridgeshire
- 170 fieldwork hours for Outdoor Environmental Education





School of Health, Medicine and Life Sciences

With a long-standing reputation in medical sciences, Herts is ideally placed to meet the growing demand for medical and healthcare professionals. Specialising in courses designed to help you make a meaningful impact on the world, you can be confident that the School of Health, Medicine and Life Sciences offers the facilities to support student success. Students can look forward to research-based course content and opportunities to practice skills in outstanding facilities, all within a supportive and inclusive environment.

Subjects Include

- Agriculture
- Biosciences
- Dietetics
- Geography
- Medicine and Surgery
- Midwifery
- Nursing
- Nutrition
- Optometry
- Paramedic Science
- Pharmacy
- Physiotherapy
- Psychology
- Public Health
- Radiography
- Social Work
- Sport

1st for Medical Technology and
Bioengineering in the East of England

Complete University Guide, 2025

2nd for Nursing and Midwifery in
the East of England

Complete University Guide, 2025

2nd for Paramedic Science in
the East of England

Complete University Guide, 2025

3rd for Sports Science in the
East of England

Complete University Guide, 2025

4th for Physiotherapy in the UK

The Guardian, 2024

4th for Social Work in the UK

The Guardian, 2024





Facilities

- Bayfordbury field station
- Clinical Simulation Centre
- Sports injuries clinic
- £50m Science Building
- Simulation ambulance
- Specialist, naturally lit labs
- Psychology observation suites





Hertfordshire Law School

Hands-on experience is key for our law students. There are a range of pro bono activities to get involved in, including volunteering at our Hertfordshire Law Clinic to provide free advice to the local community. Our on-campus, full-scale replica mock crown courtroom also allows students to practise mock trials in a realistic setting.

Students also have the opportunity to represent the School in both national and international competitions for mooting, trial advocacy, client interviewing, and mediation.

Subjects Include

- Bar Practice
- Business Law
- Criminal Justice and Criminology
- Intellectual Property
- International Human Rights
- Solicitors Practice



1st

for Social Policy in the East of England

Complete University Guide, 2025

4th

for Law in the East of England

Complete University Guide, 2025



Best Contribution by a Pro Bono Clinic – Hertfordshire Law Clinic

LawWorks Pro Bono Awards, 2022



Best Contribution by a Team of Students – Helping vulnerable people at risk of homelessness in Hertfordshire

LawWorks Pro Bono Awards, 2022



BAR
STANDARDS
BOARD

CILEX

Solicitors
Regulation
Authority



Facilities

- Links with leading law firms, barristers' chambers, international mediators, PCCs, magistrates and crown courts, prisons, and voluntary sectors
- Full-scale replica Crown Court
- Pro Bono opportunities
- Real case studies
- Co-curricular activities including; moot courts, debating, mediation, trial advocacy





School of Physics, Engineering and Computer Science

Our courses are taught by exceptional academics from across the STEM spectrum, with graduates having worked for NASA, Ferrari, Amazon and Morgan Stanley. Spectra, our £100m, five-storey building is the largest structure on the University's College Lane campus following six years of building work and houses key facilities for SPECS students. We have one of the largest engineering departments in the UK and over 50 year's teaching experience.

Subjects Include

- Aerospace Engineering
- Automotive Engineering
- Astrophysics
- Computer Science (AI, Software, Networks)
- Cyber Security
- Data Science
- Electrical and Electronic Engineering
- Physics



1st

for Aeronautical and Aerospace
Engineering in the East of England

Complete University Guide, 2024

1st

for Information Technology
and Systems in the East of England

Complete University Guide, 2024

2nd

for Civil Engineering in the
East of England

Complete University Guide, 2025

2nd

for Mechanical Engineering
in the East of England

Complete University Guide, 2025

2nd

for Physics and Astronomy
in the East of England

Complete University Guide, 2024

4th

for Computer Science in
the East of England

Complete University Guide, 2025



Institution of
**MECHANICAL
ENGINEERS**

BCS Accredited
Degree



Engineering
Council

ice **IHE**
Institution of Civil Engineers

The Institution of
Structural Engineers

CIHT

IET

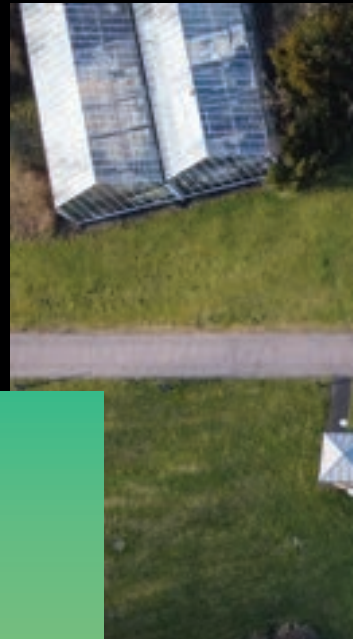
**Institute of
mathematics**
& its applications

IOP
Institute of Physics



Facilities

- Automotive workshop, including electric vehicle facility
- Merlin flight simulator
- Wind tunnel, welding bay, controls testing suite
- Industry standard software and hardware
- Labs for telecommunications, robotics, UX, clean rooms and calibration
- Robot house
- Bayfordbury Observatory – one of the best equipped teaching observatories in the UK
- Suite of space science instrumentation





Student life

- 58 Being a student at Herts
- 64 Accommodation on campus
- 66 Accommodation off campus
- 68 Support on campus



Being a student at Herts

There is more to coming to University than studying, and at Herts, our students will find a variety of activities they can get involved in, to really make the most of their experience with us.



Sports

Sport and exercise can not only help students stay in shape, but they can support general health and wellbeing. One of the easiest ways to exercise at the University is to visit the Hertfordshire Sports Village on the de Havilland Campus. The spacious, air-conditioned gym is equipped with a range of resistance and cardio Matrix Fitness machines, along with a large free weights area.

Active Students is an initiative open to all students. It's a great way to meet new people and experience something for the first time, whilst having fun and staying healthy. All activities are free and flexible.



Clubs and Societies

University isn't just about getting an incredible education; it's also about exploring ideas, trying new things and meeting lifelong friends. At the Students' Union, Herts SU, there's lots to get involved with and plenty of support for our students. Herts SU is the social heart of the University. It has lots of societies where students can meet people who share their interests; from baking to go-karting! Find out more at: hertssu.com

Starbucks, College Lane



Learning Resources Centre,
College Lane

24/7 libraries

Both LRCs are open 24/7 to Herts students; offering a wide selection of books, study areas, access to computers, and printing facilities.

Food on campus

Both College Lane campus and de Havilland campus are home to a range of different food and drink offerings. Alongside our two food courts, we have 11 other food and drink outlets including well-known high-street brands, Subway and Starbucks.

We pride ourselves on catering for everyone and have therefore ensured that we offer a wide variety of hot and cold items, including Halal, gluten-free, vegetarian, and vegan options.

Event spaces

Our informal bar Seventy7 allows students to sit back and catch up with their friends. The second floor is home to a nightclub, The Loft.



Bar Seventy7



The Enterprise Hub



Social spaces

Our campuses have lots of social spaces where students can hang out with friends, do private study or just relax. Some spaces such as accommodation shared common rooms are available to those who are living on campus, but the majority such as the Enterprise Hub, Chapman Lounge, and the Oval are available to all!

Chapman Lounge



Multi-faith facilities

The Chaplaincy supports students and staff of all faiths and none. It provides quiet spaces and places to pray, meditate, or reflect.

The Chaplaincy team is here to help encourage spiritual growth, exchange, and well-being at the University. They have a number of volunteer Chaplains from a variety of faiths.

The Key is a peaceful, welcoming haven for students and staff based on our College Lane campus and The Multi-Faith Space is a shared facility on our de Havilland campus. There is a screened area for discreet prayer or meditation, and social space.



Telford Common Room

Accommodation

On campus

There are plenty of great options to choose for our on-campus accommodation.

Living on campus is safe, practical and an amazing way to meet new people, while being minutes from lectures, libraries and entertainment.

Students can stay in our £120 million accommodation village where we offer a variety of rooms, including studio rooms and en suites for more privacy, townhouses where students share their kitchen and bathroom with other students, or twin rooms for those on a tighter budget. If they are sharing a kitchen, they will have their own food locker.

They can also opt to live with friends, so if they know other students coming to Herts, they can request to live with them when they apply.

The prices for specific rooms can be found on our website. Depending on the type of room and length of contract chosen, prices will vary.

Accommodation applications should be made once applicants have a conditional offer. The initial application allows students to confirm their preferences, indicate any friends they want to be paired with and confirm if they would like allocation in our postgraduate only section on de Havilland. Once they have paid their tuition fee deposit, the Accommodation Team will email a room allocation offer. Applicants have ten days to secure the room by paying a security deposit and set up their payment plan.





Winner of Best Halls and Student Accommodation (Whatuni Student Choice Awards, 2024)



All utility bills, Wi-Fi, and contents insurance included in the price



No need for a UK guarantor



24/7 support and security



Dedicated postgraduate accommodation blocks

Accommodation

Off campus

While we would always recommend our students live on campus for ease and convenience, we understand some may prefer to live off campus.

The University of Hertfordshire actively promotes the Partnership Accreditation for Landlords scheme (PAL). Students must make sure they choose PAL accredited landlords and agents when looking for off-campus private rented properties. The PAL website (pal-online.org.uk/students) can be used to browse accommodation online with the assurance that each property meets the legal requirements, is safe, and in good condition with no hidden costs.

Students living off campus should ensure they live within an easy, affordable commuting distance to the University. We would recommend they live in Hatfield so that they are able to walk to lectures and still have easy access to support networks and facilities on campus.

Students should check bus and train timetables online prior to booking anywhere, to ensure they can get to and from their accommodation in time for potential early or evening lectures. They should also research the commute costs of using these public transport routes, as these can add up to a lot.

The maximum distance we allow students to live from campus is 2 hours, or a 30 mile radius.

The University Unobus network and timetable information can be viewed online at: www.unobus.info

Train timetables can be checked at: www.nationalrail.co.uk



Support on campus

There is a lot of support for students while they are studying with us.

Whether a student needs help with their studies, wellbeing, or career opportunities, there are lots of services the students can access, to make sure their time with us is as stress-free and rewarding as possible.

Services include:

- Academic English and Study Skills workshops
- AskHerts
- Careers and Employment Support
- Chaplaincy
- Dean of Students
- Medical Centre
- Student Finance
- Student Immigration team
- Student Wellbeing
- Students' Union
- Study Abroad team



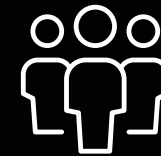
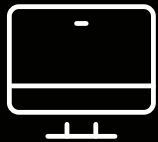
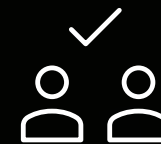
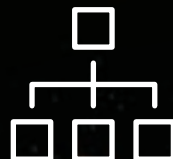


Support and wellbeing
go.herts.ac.uk/supportwellbeing



Postgraduate experience

The Postgraduate Taught Experience Survey (PTES) is delivered by Advance HR and includes questions on the full study cycle of taught postgraduate students, from motivations to study, and experience while on the course, to a student's perceptions of their dissertation/project. Our 2024 survey results reflect the importance of student experience at Herts.

**1st**of 96 for
Support**2nd**of 94 for Skills
and Development**2nd**of 107 for
Community**3rd**of 94 for
Resources**4th**of 107 for
Assessment**5th**of 107 for Overall
Satisfaction**6th**of 107 for
Engagement**6th**of 107 for
Organisation**7th**of 107 for
Teaching

Career enhancement

- 74 Careers services
- 76 Working in the UK
- 78 Hertfordshire Internships
- 80 Study abroad



Careers services

At Herts, we offer a wealth of resources, training and networking opportunities that will give our students the confidence they need to make their mark on the world.

Whether a student is seeking a part-time job during their studies, exploring career options, or preparing to start their own business, we have staff on hand to advise.

Students can also get help with:

- CV writing and checking
- Interview preparation
- Job fairs and networking sessions

All of these services are available to our students while they are studying with us, but also for up to 4 years after they graduate.

Some of the services students can access are:

Student Circus

A global career resources and jobs platform offering Herts students and recent graduates access to an online jobs board advertising skilled worker visa opportunities and placement roles both in the UK and in 30+ home countries. The site also contains exclusive access to country career guides, immigration information and a job-seekers toolkit.

Careers and Employment Service

Our careers and enterprise portal houses all of our online tools and the most up-to-date information on career sectors, the jobs market and support for business start-ups.

Handshake

Users can search for jobs and receive alerts, book advisor appointments, networking events, bootcamps and webinars, and connect with fellow students, Herts alumni, and over 5,500 employers.

GoinGlobal – overseas employment

Students and alumni considering working overseas enjoy our subscription to GoinGlobal, with country guides, job and employer listings and information about working abroad.

Postgraduate support

Postgraduate students can access support in the form of a workshop programme to help navigate the UK labour market. There is also support to find and secure placements, with an online step by step guide to securing a placement, and placement-specific drop-in sessions. The Careers and Employment Team also send a regular newsletter to help keep career planning on track.

Cobra

Support for business start-ups, those considering self-employment and small business owners. It also includes advice on how to access micro-business funding.



Working in the UK

Part-time jobs

International students who are in the UK on a Student Visa are usually allowed to work up to 20 hours per week during term time. They must ensure they check their visa status for any restrictions. Even though students can work up to 20 hours per week, we recommend that full-time students should not work more than 15 hours per week to ensure they allow enough time to focus on their studies and maintain a good work-life balance.

There are plenty of part-time student jobs in Hatfield and the surrounding areas. Our Careers and Employment Team can help students in their job search. They run a series of job fairs on campus throughout the year. Once enrolled at University, they will be given access to Handshake, an employability platform with access to the latest job opportunities, careers events and workshops.



Placements

Lots of our courses offer a one-year placement option to allow students to gain hands-on experience in the world of work. Placements provide a chance to make valuable contacts and explore career possibilities. We have far-reaching relationships with businesses, both internationally and in the UK and our Careers and Employment Team help connect students with companies that have placement opportunities. Some placements are also available within the University teams who work on campus.



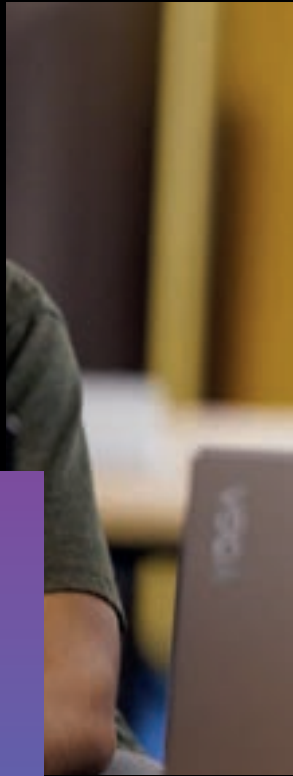
Hertfordshire Internships

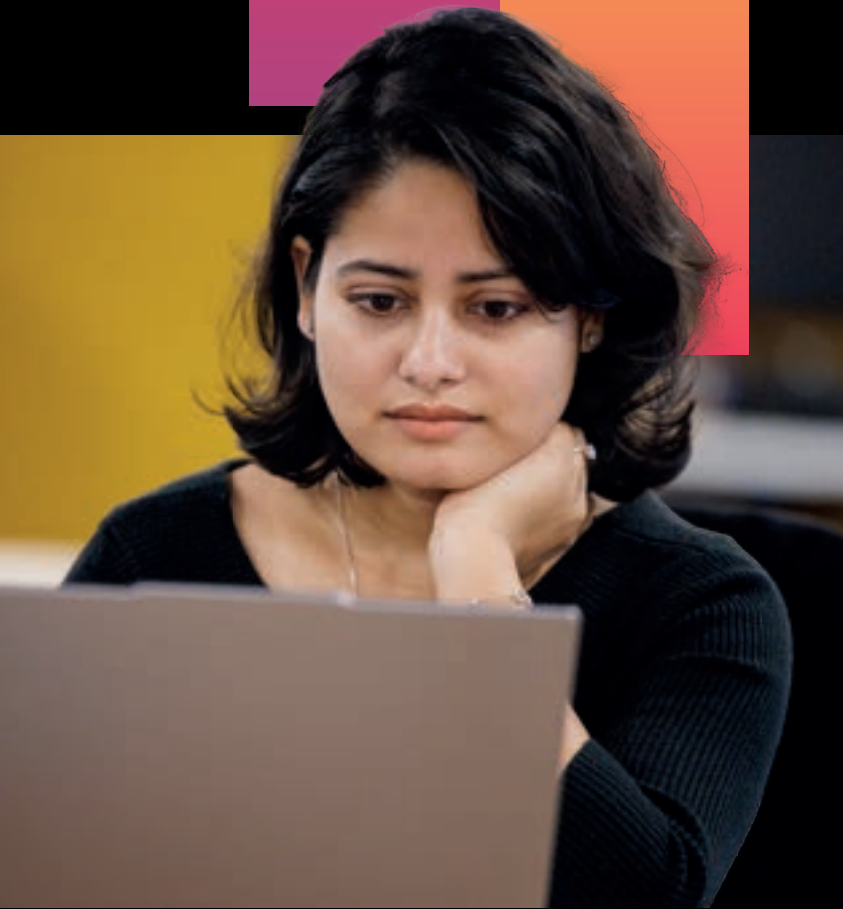
Hertfordshire Internships are available to Postgraduate students, studying at our Hatfield campus.

The voluntary online internships are for 15 hours per week, for a duration of 8 weeks, and are taken alongside normal studies.

An online internship is a professional development, employability enrichment, and upskilling opportunity which involves undertaking an internship with a company. Instead of commuting or travelling, students can complete the internship from their laptop in the comfort of their own working space.

Hertfordshire Internships give our students the skills they need to stand out amongst peers through a remote internship opportunity personalised to them and supported by a team of professionals. There are host companies in 18 career fields across the world, offering experience from real global teams. Our students will develop skills that employers are looking for in today's market.





100%

of those who completed an internship agreed that they were satisfied with their internship at their host company

86%

agreed that after completing a Hertfordshire Internship, they are more confident in obtaining a future full-time job



Internship information
go.herts.ac.uk/hertfordshire-internships



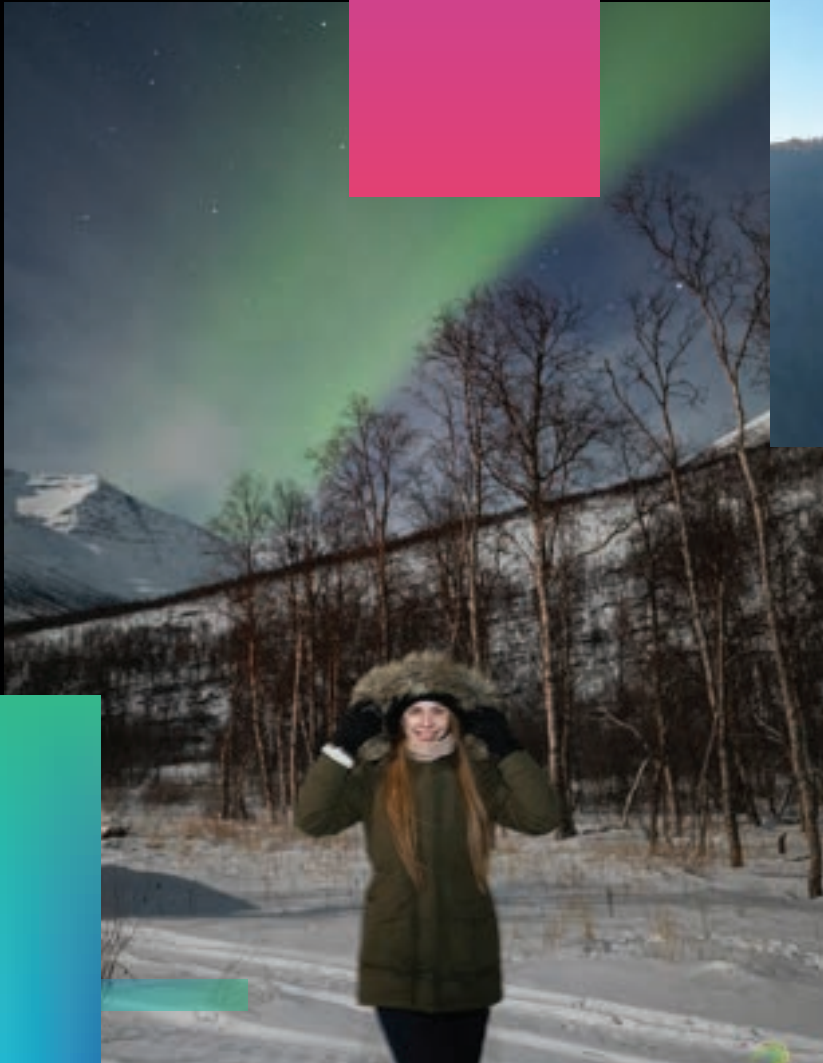
Study abroad

Partners in 135 locations over more than 40 countries.

The University of Hertfordshire offers unique opportunities for students to spend part of their course studying at one of our many partner universities around the world, or to take a work placement overseas.

Study abroad is open to undergraduate students on the vast majority of our courses. All eligible students can study in an additional “sandwich” year, taken between the second and final years. On some courses students are also able to study abroad in the second year.





Summer schools

All undergraduate and postgraduate students are eligible to apply for one or more summer schools abroad at our partner universities around the world.

Summer schools
go.herts.ac.uk/studyabroad



Compliance

- 84 Ensuring quality
- 86 Agent Quality Framework
- 88 National Code Standards
- 90 TrainHub



Ensuring quality

As a university that sponsors international students under the UK's Student Visa route, we are entrusted with a significant responsibility and must comply with strict Home Office regulations.

To maintain our sponsor licence, we have robust internal processes to ensure full compliance with immigration laws and guidance. These processes help protect the integrity of our status as a university; support international students throughout their academic journey; and safeguard our ability to continue attracting a diverse and talented global student body.

The university maintaining a strong and compliant sponsor license directly benefits your agency by ensuring stability, credibility, and therefore trust, in sending your students to study with us. You can confidently promote Herts to prospective students, knowing their visa applications are being supported by a trusted sponsor. This will also help you to build long-term trust with students and parents.





Whilst we recognise the value of AI and Language Learning Models, we do require that they are used appropriately, safely and ethically, throughout the student application journey and beyond. Misuse of AI and LLMs could be considered as deception.

Our goal is to ensure:

- A lower than 5% visa refusal rate
- Over 95% enrolment rate
- Over 95% completion rate

UK Agent Quality Framework

The Agent Quality Framework (AQF) is a set of tools to enhance the experience of international students working with education agents and counsellors to apply to study in the UK.

The AQF is designed to ensure agents and counsellors have the right knowledge of the UK as a study destination and understand the integrity of the UK visa and immigration system to uphold the UK's reputation as a world-class study destination.





The AQF promotes four key principles:

- empowering student choice and enabling informed decision making
- ensuring good agent governance and professionalism
- promoting ethical agent practices, professional knowledge and competency
- increasing transparency and accountability.

The AQF recognises the critical role that agents and counsellors play in attracting and supporting international students on their journey to study in the UK. It provides a suite of guidance and quality assurance tools designed to enhance the partnership between UK education providers on the register of licensed student sponsors and their agent/counsellor representatives.

We are committed to and have signed the UK Agent Quality Framework pledge.

National Code Standards

The National Code of Ethical Practice for UK Education Agents is made up of five Standards. Each of these Standards contains a range of expected/desirable practices and suggested evidence points.

Agents should be mindful of these in all the work they do.

◆ Organisational Behaviours

You should conduct yourself with due regard to the regulatory conditions in the market(s) in which you operate as well as complying with all applicable national laws, regulations and official policies.

You should act with integrity and in a manner that reflects positively on the image of the profession, partner providers and of the UK education sector as a reliable and trustworthy provider of high-quality education and training.

◆ Ethical Business Practice

You promote yourself and your partner providers fairly and without recourse to unfavourable or negative comparisons with other providers, or otherwise employ unfair or unprofessional practice to damage the interests of other providers.

You are honest in communicating information about yourselves, your partner providers and your student clients in published, oral or in any other form.



◆ Objective Advice and Guidance

You should provide accurate advice and guidance tailored to the student clients' needs, wants and capabilities.

You shall not knowingly or by a failure of professional standards provide or disseminate false, incomplete or misleading information.

◆ Student-Centred Practice

You advocate for qualified students in their desire to gain admission to recognised, accredited and contracted providers.

You act in the best interests of student clients as well as the partner providers and offer advice, counselling and information to students, and where appropriate their parents, in a manner consistent with this Code.

◆ Organisational Competence

You shall maintain your staff and service delivery partners knowledge of the UK and of your partner providers, and the skills associated with delivering professional practice with a high degree of competence.

TrainHub

In line with our commitment to provide a robust process for working with our agent network, we have recently launched an online training programme through the TrainHub platform.

This new platform has moved our training resources for new and current international education agents online, allowing for more accessibility and flexibility. For our new agents, this offers a platform to learn all about Herts, and for our continuing partners, it will offer the chance to reinforce your knowledge of our institution and learn of any key updates.

This new training platform not only reinforces our work around our compliance and robust recruitment practices, but allows our agents and counsellors to have the confidence that you have the most up to date knowledge about Herts, in an easily digestible format.

This global training will ensure that you can offer the best applicant experience to those looking to come and study at Herts, by providing you with engaging and informative sessions, while also safeguarding our high level of visa acceptances. You can have the confidence of working with us, and knowing we are a reputable, robust, and consistent partner.

TrainHub offers:

- All the required training in one convenient place
- You to track your training journey
- Certification on successful completion
- Ongoing training management



Application guidance

- 94 Applying to Herts
- 96 Scholarships and fees
- 98 English language requirements
- 100 Pre-sessional English



Applying to Herts

Alongside the application form, applicants will also be required to provide the following:

- A signed and recently dated academic or workplace reference
- A personal statement explaining why they wish to study in the UK; specifically at Hertfordshire; and why they have chosen their selected course. Additionally, they must describe how this aligns with their career aspirations
- A scan of their passport photo page
- A scan of all their academic qualifications, including front, back and grading scales as PDF where possible
- A scan of their English language qualification
- Where original academic documents are not in English, certified translated copies are required alongside originals.

Submit application

1

Receive conditional or unconditional offer

2

If conditional, submit outstanding documents

3

4

Apply for accommodation

5

Pay tuition fee deposit

6

Sponsorship interview*

* Admissions will inform applicants if this applies to their application



7 Financial checks*

8 Receive CAS

9 Apply for student visa

10 Receive visa

11 Book flight to the UK

12 Attend orientation week and enrolment



UH

Scholarships and fees

The University of Hertfordshire has competitive tuition fees.

We have invested hundreds of thousands of pounds to offer scholarships to international students from around the world. Our aim is to make studying at Herts more affordable and accessible.

Tuition fees

We charge annual tuition fees which change each year. Fees will vary depending on the type of course the applicant is studying. International fees will be displayed on each course page on our website.

Deposit

Applicants will be required to pay a deposit as part of their conditional offer. Deposits go towards their first-year tuition fee and are usually a minimum £5,000, however some courses and criteria will require an increased deposit. Admissions will confirm the deposit amount to the applicant via email.

Please ensure your applicants use one of the recommended payment methods on our website to keep their funds secure and protect them from payment scams. They should quote their 8 digit Herts ID number as reference for the payment so we can assign the funds to their profile.

Liability dates

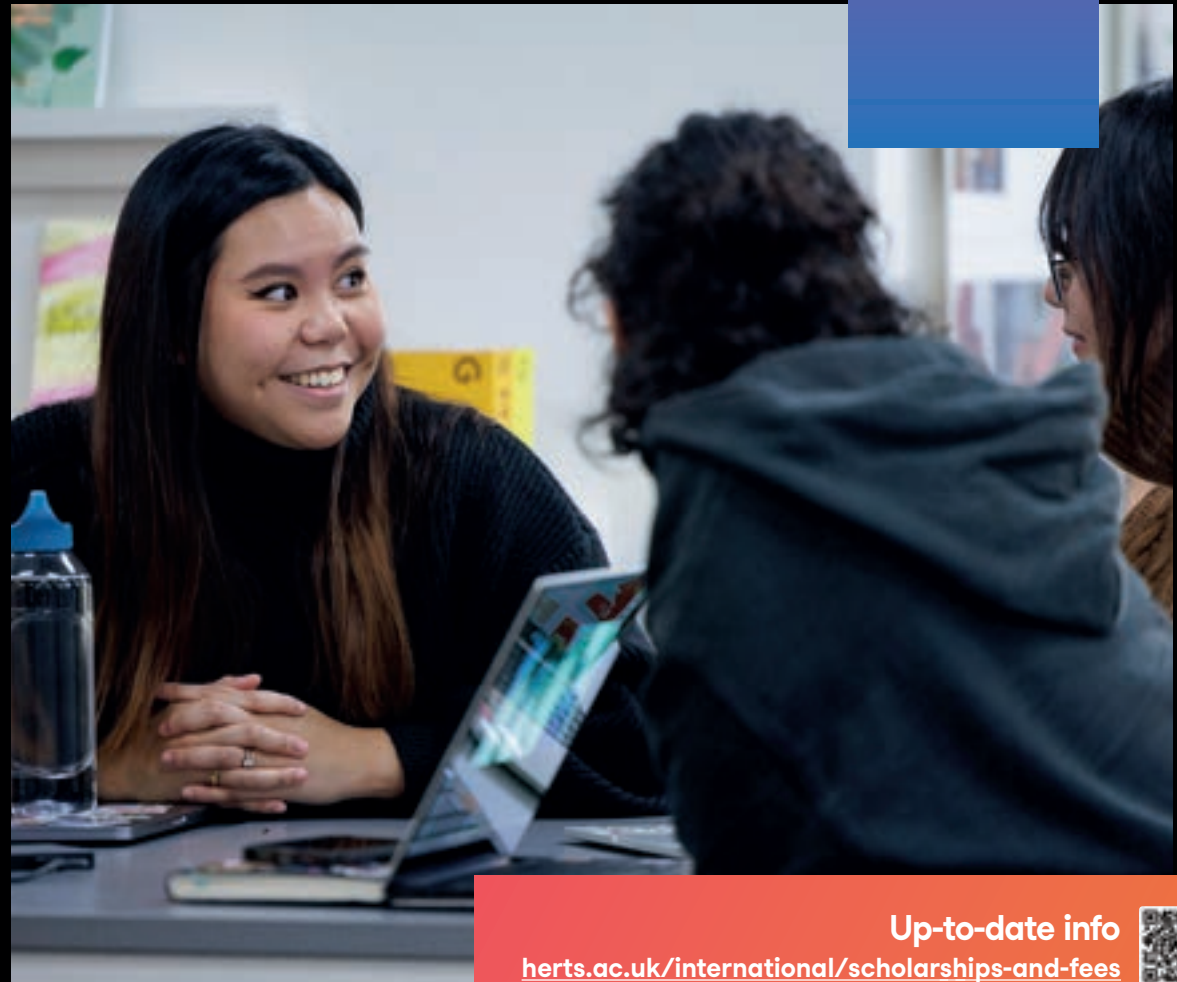
Students will need to pay the remaining tuition fees by set liability dates throughout the year. If they fail to meet these payment deadlines they risk losing access to their learning materials and could be withdrawn from their course. We recommend they pay their tuition in full at the beginning of the academic year wherever possible to take advantage of our full payment discount.

Scholarships and discounts

Scholarships are available for most of our courses and usually contribute towards first year tuition fees.

Some scholarships are merit based while others require eligible applicants to meet certain deadlines. For our merit based scholarships, we review academic achievement, English language results and the content of the applicant's personal statement. Our team look for enterprising and aspirational students who want to excel in an international university.

Our scholarship offering is updated for every intake. In previous intakes, applicants have been awarded up to £4,000. Our current offering along with each scholarship and discount terms and conditions can be found at go.herts.ac.uk/int-scholarships



Up-to-date info
herts.ac.uk/international/scholarships-and-fees



English language requirements

When students apply to the University, they need to submit proof of their English language proficiency.



The majority of our standard courses accept the following tests and scores, however please ensure you check each individual course page as some require higher scores or specific tests:

GCSE English Language	Grade C or above
IGCSE English	Grade C or above
International English Language Testing System (IELTS)	Score of 6.0 (with no less than 5.5 in any band) for undergraduate or 6.5 (with no less than 5.5 in any band) for postgraduate
Cambridge English Qualifications	B2 First (FCE) and C1 Advanced (CAE) score of 169 (with no less than 162 in any band) for undergraduate or 176 (with no less than 162 in any band) for postgraduate. C2 Proficiency (CPE) score of 180 (with no less than 162 in any band) for both undergraduate and postgraduate
Pearson Test of English (PTE)	59 (with no less than 59 in any band) for undergraduate or postgraduate
Test of English as a Foreign Language (TOEFL)	72 with band scores of reading 18, writing 17, listening 17, speaking 20 for undergraduate or a score of 79 with band scores of reading 18, writing 17, listening 17, speaking 20 for postgraduate
LanguageCert International ESOL	B2 (Listening, Reading, Writing, Speaking) Listening: 33/50; Reading: 33/50; Writing: 33/50; Speaking: 33/50
LanguageCert Academic	Score of 65 (with no less than 60 in any band) for undergraduate, or 70 (with no less than 60 in any band) for postgraduate
Skills for English	Minimum B2 Pass in all four components (equivalent to IELTS 6.0), minimum B2 Pass with Merit in all four components (equivalent to IELTS 6.5)
Oxford International English Test Centre (OIETC)	Overall grade B2+ with B2 in each skill (equivalent to IELTS 6.0), overall grade C1 with B2 in each skill (equivalent to IELTS 6.5)
Duolingo English Test	120 overall with no less than 95 in each band (equivalent to IELTS 6.5 with no less than 5.5 in each band), and 105 overall with no less than 95 in each band (equivalent to IELTS 6.0)

English from International Foundation Providers, including Kaplan Test of English (KTE)

Some local English language qualifications are also accepted such as:

Indian Standard XII English Language 65% for undergraduate or 70% for postgraduate.

Malaysian SPM1119 Advanced English Grades 1-6 or A-C.

Nigerian WAEC/NECO C6 (1-6 or A-C)

This is not a complete list, please visit: herts.ac.uk/international to find out more.

IELTS, PTW and TOEFL tests are valid for two years and must be valid up to the point the student submits their visa application.

Entry requirements are subject to change, so please check the individual course page for the most up to date requirements.

Pre-sessional English

We offer Pre-sessional English courses for applicants who have not quite reached the IELTS level required for their degree course. There are different routes available, depending on the applicants current IELTS score and the result they need for their degree course.

These courses help applicants to develop their academic language and study skills so they can continue their education effectively at either undergraduate or postgraduate level. Successful completion of the Pre-sessional English course means they will not need to take another IELTS exam.

Route	Current IELTS	Required IELTS	PSE Duration
Standard	5.0 (no less than 4.5 in any band)	6.0	11 weeks
	5.5 (no less than 4.5 in any band)	6.0	6 weeks
Higher	5.5 (no less than 4.5 in any band)	6.5	11 weeks
	6.0 (no less than 5.0 in any band)	6.5	6 weeks
Advanced	6.0 (no less than 5.0 in any band)	7.0	11 weeks
	6.5 (no less than 5.5 in any band)	7.0	6 weeks

Programme delivery

We deliver our Pre-sessional English courses online to ensure they are available to as many students as possible, whilst still maintaining the highest standards of teaching.

Lessons are usually 9am to 12pm UK time, every day, with the option for afternoon sessions in some time zones. There will be 3 hours every day followed by approximately three hours of self-study which can be completed at a time suitable for the student.

Students must attend all sessions in a quiet area so they can engage with the class and content. They should not try to work or complete other commitments while class is in session as this impacts their learning, and failure to pass the programme may mean they cannot progress onto their degree course.

How to apply

Our Pre-sessional English courses are only available for applicants with an offer to study a degree programme at the University of Hertfordshire. Email international@herts.ac.uk to request for an applicant to be placed on a PSE programme. Admissions also need a copy of their IELTS test certificate.

Application documents

- 104 Personal statement
- 106 Health personal statement
- 108 Health placement information
- 110 Creative Arts portfolio
- 112 Reference letters
- 114 Bank letter
- 116 Bank statements
- 118 Sponsorship interviews



Personal statement

The personal statement is your student's opportunity to explain to the University why they should receive an offer to study. It is important that it includes answers to the following questions:

Reason for applying to the course

- Applicants should think about the process they went through on deciding on their course and how it relates to any previous study. What attracted them to the course?
- How much do they know about the course and the modules they will be studying?
- What qualification will they receive and why is this important to them?

Reason for applying to Hertfordshire

- They should think about the reasons why the University of Hertfordshire attracted them more than other universities in the UK offering the same course.
- Do they know about the facilities offered, including types of accommodation, support services and social aspects?
- Did the location of the campus influence their decision? Why?
- What else did they find out when researching the area that influenced their decision?
- Do they know anyone who has studied with us before?

Reason for applying to a UK university

- They should think about why studying in the UK will benefit them more than studying in their home country, or another English speaking country.
- Was there anything in particular that attracted them to the British education system?
- How will the experience benefit them?

Career aspirations and how the course contributes

- Applicants should think about their future plans, whether they wish to continue studying in the UK at a higher level, return to their home country to find a job or remain in the UK to work.
- They should research their job prospects
 - how will their degree help them gain employment or with their career goals?

Students applying for a course in the School of Health, Medicine and Life Sciences have additional requirements for their personal statement, to ensure they have a good understanding of the profession. Ensure they are aware of the additional guidance available for these subjects.

Health personal statement

If you have applicants applying for Health and Social Work courses within the School of Health, Medicine and Life Sciences, we have further guidance they should take into consideration when writing their personal statement. This is due to the special requirements of these courses.

Why health?

The University wants to know that its applicants are willing and eager to become health practitioners. We advise that applicants make clear their reasons (both personal and professional) for wanting to study and work in this field.

The NHS

It is important that applicants of health related courses have an understanding of the NHS and how it works.

We recommend applicants do their own research into the NHS, its Values and the Constitution. Information can be found on both the NHS website and the UK Government's website at: healthcareers.nhs.uk/working-health/working-nhs/nhs-constitution

The University will want applicants to show this understanding in their personal statement, therefore we recommend they devote a portion of their personal statement to demonstrate their knowledge. We recommend linking the Values to applicants' own experiences if possible.



Experience

Work experience is an excellent way to develop an understanding of healthcare careers. We want to know any relevant work experience an applicant has, the duration of the work, where and with which company it was completed. Applicants should describe how this experience influenced their decision to pursue a career in the health sector.

There is no set amount of experience we expect our applicants to have, anything from a few days to a few weeks is acceptable unless specifically stated on the course entry requirements.

Applicants can look for opportunities at local hospitals, clinics, hospices and charities. Even smaller community-based clinics can offer excellent opportunities to observe practitioners as they work.

Understanding the profession

The University will want to know that a student understands the various avenues available to them as a health practitioner. We advise that prospective students of our health courses visit their online professional body to research their chosen profession.

It is extremely important that applicants have a thorough understanding of the work ahead of them and are able to demonstrate awareness of this.

Interests and hobbies

In addition to a focus on health studies, our course tutors want to get to know the students who come to study.

Personal statements are also a place for applicants to get across the kinds of people they are in their free time, and applicants might want to mention hobbies and interests like playing sports or a musical instrument.

Health placement information

Students on Health and Social Work courses will usually have placements integrated into their programme. It is important students know what to expect in regards to placements before they arrive in the UK.

Placement locations

Our placement sites are mainly in the county of Hertfordshire, and the surrounding counties of Bedfordshire, Buckinghamshire, Cambridgeshire, Essex and London. However, placement sites can be located even further away in areas within the East and South East England regions.

Allocation

Students are unable to select or negotiate which practice placement site they will be allocated. We do try to consider preferences and individual circumstances but cannot guarantee preferential placements. Students need to attend the sites allocated to them and follow their specific shift patterns.

Grants and bursaries

International students are not eligible for the grants and bursaries offered by the UK Government for these specific courses.

Additional costs

Course tuition fees are inclusive of the practice placement fee and any uniform that may be required, excluding shoes or accessories which students will need to purchase themselves. Students may need to pay postal costs for uniforms.

Students need to pay their own travel costs when commuting to and from placements, which is why we recommend they live on campus or as close as possible, as placements have been determined with the campus location in mind. Students may need to find and pay for temporary accommodation while on placement, especially if it is not practical to commute to the site location. The University cannot reimburse international students placement travel or accommodation costs.

Access to a vehicle

Certain programmes placement sites may require students to be able to drive and have access to their own vehicle. They will need appropriate insurance cover for business use. If this is required on a students programme who cannot drive or does not have access to their own vehicle, placement opportunities may be restricted. This could also result in a delayed start to placements.

Students who do wish to drive while in the UK need to check their licence is valid for use with the Driver and Vehicle Licensing Agency (DVLA) or UKCISA: gov.uk/driving-nongb-licence

ukcisa.org.uk/student-advice/life-in-the-uk/travel-and-transport-in-the-uk

Applicants can check their course specific requirements on the Course Fact Sheets on the University website.



Creative Arts portfolio

Students who apply to our Creative Arts courses may be required to provide a portfolio of work as part of their application. This should include a well-presented selection of the student's work.

Applicants should listen to the advice of course tutors on what to include, but they should remember that the University wants to see a range of work that reflects both their overall experience of art and design practice, but also their chosen area of study.

Digital portfolios are accepted if they are provided in a viewable format. Applicants who have face-to-face interviews should consider bringing a laptop or tablet to display their portfolio if they choose to show it digitally.



How to structure

We advise that applicants put their strongest pieces at the beginning and the end of their portfolios, so that they hopefully leave a lasting impression on the course tutor.

When examining portfolios, the University looks for evidence of:

- Creativity and drawing
- Practical skills
- Research skills
- An open-minded, enquiring, and experimental approach to practical work
- Visual communication skills
- The ability to develop ideas

The best portfolios will have time and effort put into them, and the presentation of a portfolio goes a long way to reflecting this dedication. Applicants should not attempt to assemble them the night before an interview.

What to include

- Strong ideas and concepts executed to a high standard
- Details of the journey that led to the creation of the work, showcasing research and development
- Digital scans of any physical work too large to show in person
- Ideas sheets; samples, worksheets and storyboards
- 2D and 3D work if relevant to the course

For more information and advice on portfolios, watch our Portfolio Advice videos at: go.herts.ac.uk/portfolioadvice

Reference letters

Make sure your students:

- Choose a relevant referee
- Obtain a reference with a company letterhead (digital letterhead is acceptable)
- Explain the student's relationship with the referee
- Express confidence that they will complete the course
- Ensure that the referee signs the letter
- Add the referee's contact details in the footer

Employer Reference Letter

To the right is an example reference letter for a student applying for a degree in accounting.

01/04/2025

To Whom It May Concern,

As the vice president of Blank Co. Ltd. I am proud to recommend Mr. Smith who is a Sales Manager at my company. I would also like to offer my greatest support for his proposed study plans.

Firstly, allow me to give you a rough idea of our company; Blank Co. is a reasonably successful company in the UK, and the core of our business is the manufacturing and sales of garments, accessories, and materials.

Mr. Smith's primary strengths are his independence and ability to deal with high pressure situations and solve problems as they arise. He has proven himself to be exceptionally able time and again. He is also very pragmatic when accessing the industry and has offered invaluable opinions regarding our quality control exercise and cost analysis reformation projects, and has made a great contribution to both the manufacturing process and the administrative organisation. He is a great leader, and with his team produces fantastic results in any and all situations.

Mr. Smith is articulate and has enviable communication skills; as evidenced by his thoroughly professional treatment of our foreign clients, including the painstakingly organised meetings between them and the company, and his clear presentation of our products to the clients. His skills in meetings have led to his securing an impressive number of deals, thereby proving himself a positive asset to our company.

Finally, I would like to express my absolute confidence in Mr. Smith's capability, I feel that he will be great asset to your programme and I am sure that he will complete the course with flying colours.

Regards,

Name Here
Executive Vice President, Blank Co. Ltd.

Namehere@blank.co.uk

Academic Reference Letter

To the right is an example academic reference letter for a student applying for a degree in Accounting

01/04/2025

To Whom It May Concern,

It is my great pleasure to recommend Mr. Smith for admission to your programme. I tutored Mr. Smith throughout his three years at the University through my lecture and seminars. I also advised him upon his graduate thesis as his personal tutor for the assignment. Through his dedication to his studies, and the eagerness with which he approached research projects, Mr. Smith has proven himself a truly mature, responsible individual.

In my time as the accounting, finance, and economics programme leader, I have come across many students with an incredible knowledge of the subject area. However, Mr. Smith is a particularly unique student, in that he contributed to my seminars in a meaningful way; providing feedback and interaction related to his prior studies and work experience; sharing the knowledge he had gained with his fellow seminar members. His efforts to broaden his horizons through my lectures, and his own research were simply outstanding.

I believe that Mr. Smith will not only gain a great deal from the opportunities and experiences offered by the university, but also that he will perform with continuing excellence and greatly contribute to your programme. Mr. Smith is an incredible student, and I offer him my full recommendation.

Regards,

Name Here
Programme Leader - accounting, finance, and economics
University of Blank

Namehere@blank.ac.uk

Bank letter

When using a bank letter as evidence of funds, the letter must show all of the following information:

- Name or parent's/legal guardian's name
- The account number
- Date must be shown on the letter
- The financial institution's name and logo
- The amount of money held in the account
 - there must be enough to cover both the course fees and living costs
- That the money has been held for a consecutive 28 day period ending no more than 31 days before the date of their application
- Bank letters must be originals and printed on bank letter-headed paper
- Bank letters must be in English or have a certified translation included

08/02/25¹

To whom it may concern,

This letter confirms that Firstname Lastname² holds an account at our bank. The account number is 0000 000 000³.

The total amount held is £20,000. The minimum balance held over the last 28 consecutive days is £18,000.

Yours faithfully,

[Name Here]

¹Date must be within the last 31 days

²Your name or their parent's/legal guardian's name

³There must be enough money in the account to cover both their course fees and living costs

Bank statements

In order to apply for a visa, students will need to show that they have enough money to cover their tuition fees and to support themselves during their studies (this is known as maintenance). Meeting the financial requirements for a visa makes up 50 points of the 70 points required, so it's important that the student understands exactly which financial documents to submit with their visa application.

One of the most common causes for visa refusal, is applicants failing to either show that they have the correct amount of funds, or to provide the correct financial documentation.

What you need to know

Bank statements must contain all of the following information:

- Student's name or their parent's/legal guardian's name
- Account number
- Financial institution's name and logo
- Amount of money available in that account
- Bank statements must be originals
- Bank statements must be in English or have a certified translation included

Statements must show that the money has been held for a consecutive 28 day period, prior to print date, ending no more than 31 days before the date of the visa application.

An electronic statement is an online document which can be printed by the student. Most banks offer online banking to their customers, and students often find it easier to print their own statements. If the student prints their own statement from their online account, this is called an 'electronic statement'. Electronic bank statements can be used with visa applications, but they must contain all of the details listed previously and each page of the online statement must be stamped by the bank, or have an accompanying letter from the bank (on headed paper) confirming that the statement is genuine. Statements from cash machines cannot be used as evidence of finances.

If the student wishes to use a parent or guardian's account, they will also need to submit a legal document evidencing their relationship. For example a copy of their birth certificate to show their parents' names. They also need to submit written consent from their parent/guardian confirming they are happy to use the funds to study in the UK.

If funds are held in more than one account, statements may have to be submitted from all these accounts, however the closing balance must be on the same date.

08/02/25¹
0000 000 000²
Firstname Lastname
00 Street Number³

Date	Credit	Debit	Balance
01/01/25	£1,000		£23,465
03/01/25		£600	£22,865
03/01/25		£50	£22,815
10/01/25		£25	£22,790
12/01/25		£25	£22,765
12/01/25	£2,000		£24,765
17/01/25		£20	£24,745
20/01/25		£380	£24,365
21/01/25		£1,000	£23,365
22/01/25		£5,865	£17,500 ⁴
25/01/25	£1,000		£18,500
25/01/25		£500	£18,000
28/01/25	£30		£18,030
05/02/25 ⁵	£2,620		£20,650

¹ Date must be within the last 31 days prior to visa application

² Account number

³ Name and address of account-holder

⁴ The lowest balance over the 28-day period must not fall below the required amount

⁵ Date of the last transaction must be within the last 31 days

⁶ Stamp and date (online printed statements must be stamped by the bank)



Sponsorship interviews

Sponsorship interviews, sometimes referred to as credibility checks, are part of the University of Hertfordshire and Student Visa application process.

The purpose of a credibility interview is to ascertain that a student's intentions to study in the UK are genuine. During the interview they will also be expected to demonstrate that their English language ability is sufficient to follow their chosen course and level of study.

Interviews with Herts staff

Before their CAS is released, applicants may be asked to complete a sponsorship interview with a member of Hertfordshire staff, so that we can assess them and our confidence in sponsoring them for their Student Visa. Applicants will be invited to upload a declaration video (a short few seconds confirming their name with their face in clear view), so that we can then match them to their photograph from their official documents. Uploading the declaration video also indicates to the admissions team that the applicant is ready for interview.

Herts staff will then proceed to call the applicant at an unspecified date and time to complete a telephone interview. We refer to this as an "on the spot" interview, as the applicant is called and invited to complete

their telephony interview "on the spot" to allow for a more genuine, natural conversation rather than them having a page of notes in front of them. Some applicants may be asked to complete their interview via video call. If a video call is required, a date and time will be provided to the applicant.

Interviews with the UKVI

The UKVI may also ask the student to attend an interview as part of their visa application. They will send the invite via email or letter, so please remind the applicant to regularly check their inbox spam folders. Interviews with the UKVI could be face-to-face or via video call and usually last 15-20 minutes. If a student is asked to complete an interview, this is mandatory.

Tips for applicants

- Relax and answer all questions in full as naturally as possible
- Try to imagine speaking with a friend or family member
- Some questions are designed to check English language fluency so may not be related to studies
- Do not use scripts or physical aids
- Do not try to pre-empt the questions, only answer the one being asked.



Index

Why choose Herts?	2	Schools of Study	30	Compliance	82
Campus investment	6	Hertfordshire Business School	32	Ensuring quality	84
Where we started	8	School of Creative Arts	36	UK Agent Quality Framework	86
Investment timeline	10	School of Education	40	National Code Standards	88
International Office	12	School of Health, Medicine and Life Sciences	44	TrainHub	90
World-leading research	14	Hertfordshire Law School	48	Application guidance	92
Where to find us	16	School of Physics, Engineering and Computer Science	52	Applying to Herts	94
Welcome to Herts	18	Student life	56	Scholarships and fees	96
College Lane campus	20	Being a student at Herts	58	English language requirements	98
de Havilland campus	22	Accommodation on campus	64	Pre-sessional English	100
Access to London	24	Accommodation off campus	66	Application documents	102
Global Recruitment	26	Support of campus	68	Personal statement	104
QS Stars Rating	28	Postgraduate experience	70	Health personal statment	106
		Career enhancement	72	Health placement information	108
		Careers services	74	Creative Arts portfolio	110
		Working in the UK	76	Reference letters	112
		Hertfordshire Internships	78	Bank letter	114
		Study abroad	80	Bank statements	116
				Sponsorship interviews	118



University of Hertfordshire

Hatfield AL10 9AB
+44 (0) 115 824 2657

[herts.ac.uk/international](https://www.herts.ac.uk/international)
international@herts.ac.uk

Follow us on social media

[@UniofHertsINTL](#)
[/UniofHertsInternational](#)

