

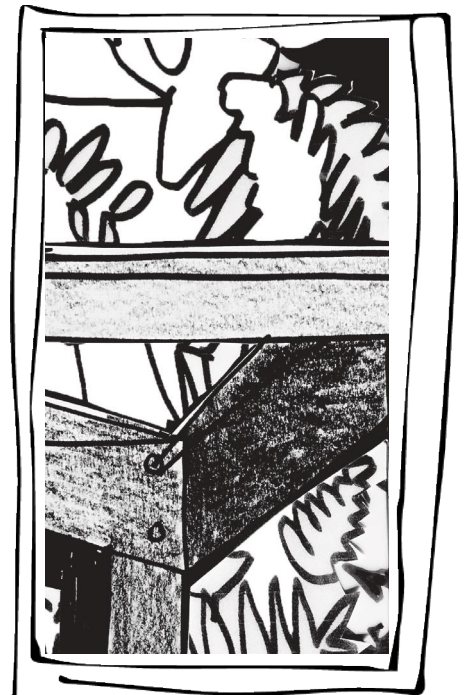
ARCHITECTURE ART NATURE

Fredrick Gibberd's interest in the relationship between art, architecture and nature is evident throughout the garden

Activity Sheet

The layout of the garden as a sequence of 'rooms' inspired Krijn de Koning to create a structure of dividing walls that acts to partition the space and draws attention to the relationship between the surrounding trees and the sculpture

- 1 **Overleaf** the ARCHITECTURE has been drawn as a collage of fragmented walls - gaps between buildings, stairs, windows and doorways
- 2 In each of the gaps you can **add drawings of NATURE**
- 3 You may want to **draw** a view of a whole plant or close up on the detail of one or two leaves
- 4 Think about the shape of **plants** and pick bold and striking forms
- 5 **Fill** the whole of each space taking the drawing right to the edge of the frames
- 6 Focus on the outline, working quite quickly to fill all the frames
- 7 Take your drawing home to colour

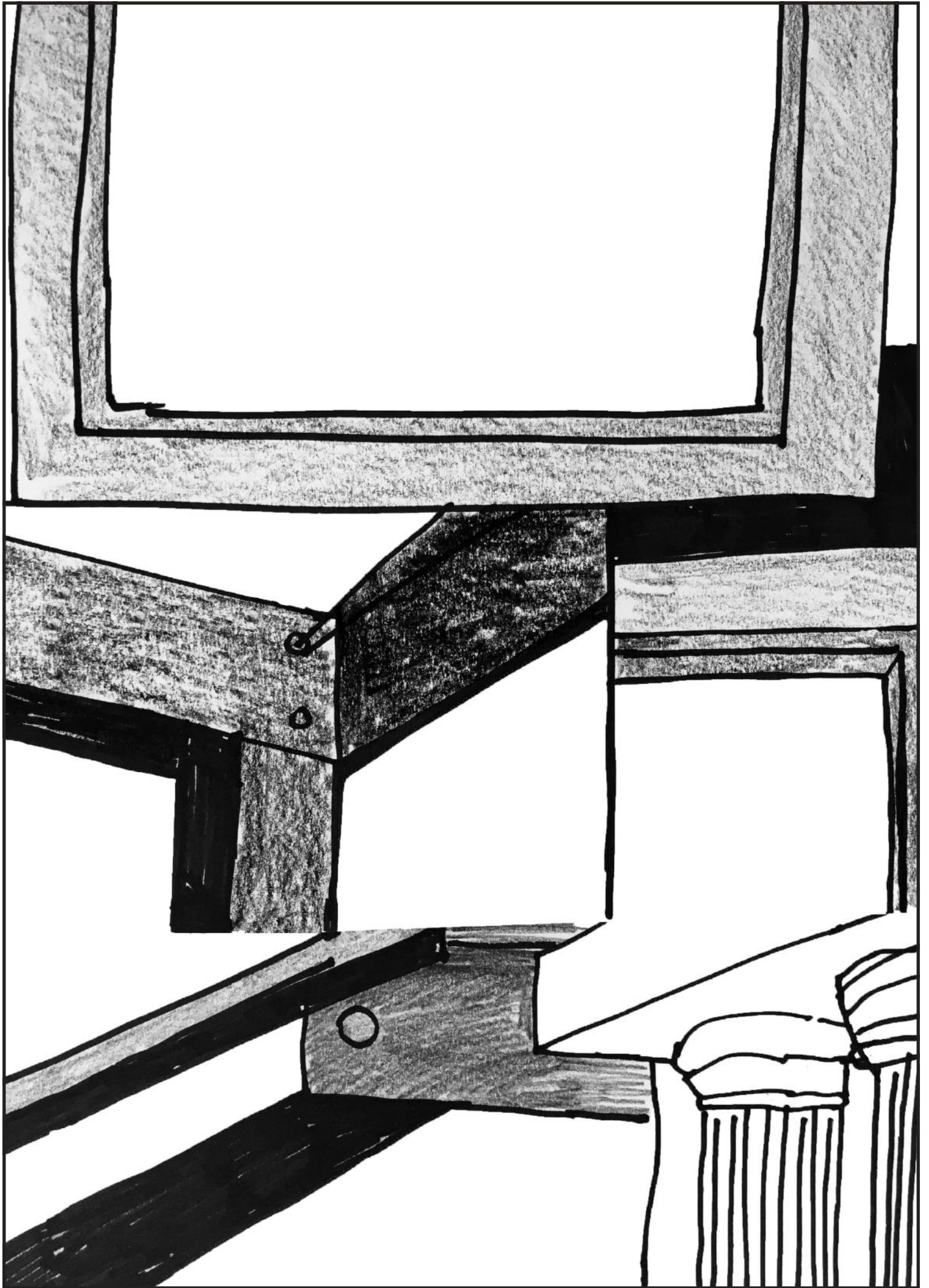


Please take a photo of your artwork and share it with us

Don't forget to tag your creations @UniHertsArts on Instagram, Twitter and Facebook using #CreateItShareIt #UHArtsatHome (ask a parent/carer if you're not on social media)

Working in partnership with UH Arts, artist Krijn de Koning has created Green/blue, a new site-specific installation at The Gibberd Garden. Part of the New Geographies project. Find out more, and take part in other activities at www.uharts.co.uk

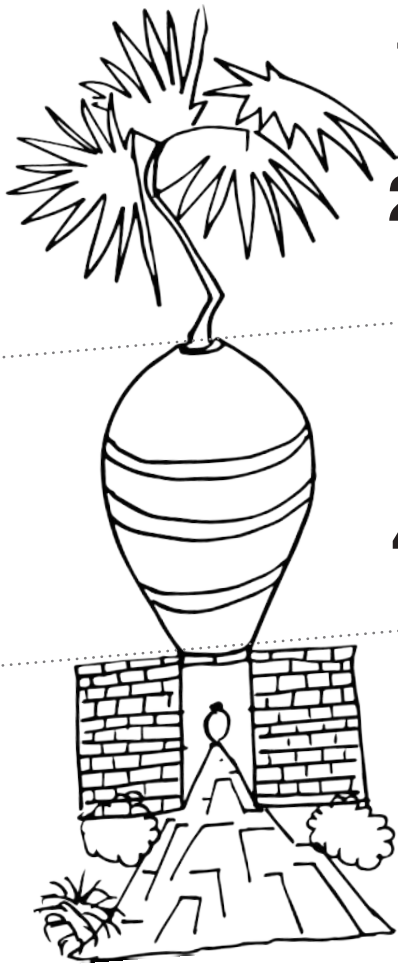
explore some of the ideas that inspired Krijn de Konings's installation Green/blue at the Gibberd Garden



ARCHITECTURE ART NATURE

Activity Sheet

You might recognise the game we are going to play, it is sometimes called 'picture consequences' or 'exquisite corpse'



1 Make 2 **folds** in the paper so that it divides into 3 even sections and unfold

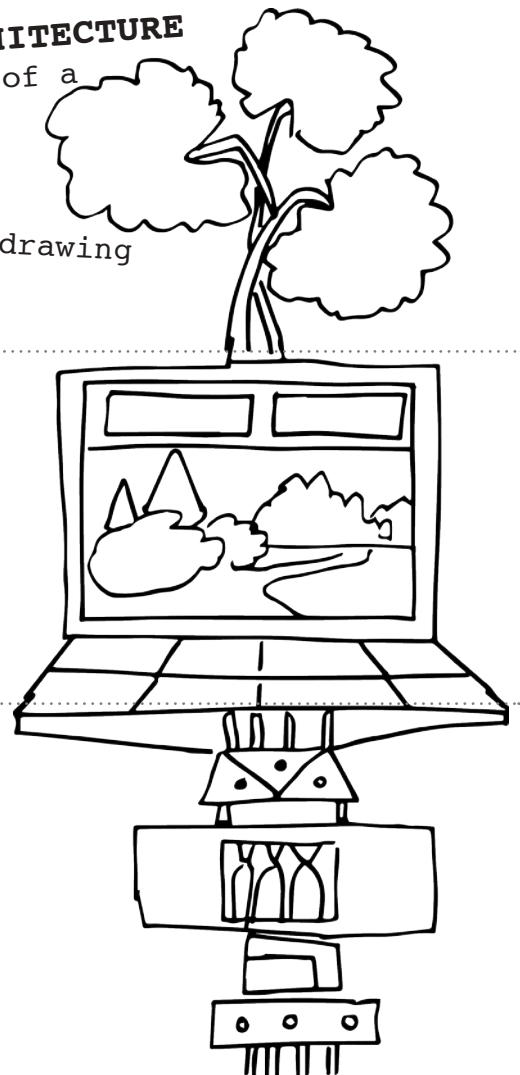
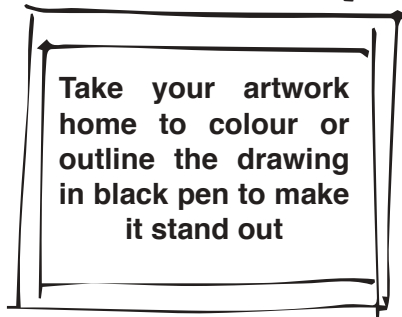
2 The first person starts at the top and **draws NATURE**

Make it big in the space
Fold back the paper so just the bottom edge shows so the next person can line up their drawing

3 The next person **draws ART** - look at the shape of one of the many sculptures in the garden. **Fold** back the paper again

4 The final **drawing** is **ARCHITECTURE** - this can be an element of a structure in the garden

5 Unfold to reveal your drawing



Please take a photo of your artwork and share it with us

Don't forget to tag your creations @UniHertsArts on Instagram, Twitter and Facebook using #CreateItShareIt #UHArtsatHome (ask a parent/carer if you're not on social media)

New **GEO**
GRAPHIES



